

AMERICAN SOCIETY FOR NUTRITION ONSITE PROGRAM

NUTRITION AND
LIFE SCIENCE

MEET AT THE HUB.

BOSTON

SCIENTIFIC SESSIONS & ANNUAL MEETING

at Experimental Biology 2015

March 28 - April 1 **BOSTON CONVENTION AND
EXHIBITION CENTER**

PROGRAM TRACKS

- ✓ PEDIATRIC NUTRITION AND EARLY DEVELOPMENT
- ✓ BIOCHEMICAL, MOLECULAR AND GENETIC MECHANISMS
- ✓ DIET AND NON-COMMUNICABLE DISEASES
- ✓ HUMAN NUTRITION AND METABOLISM
- ✓ GLOBAL AND PUBLIC HEALTH NUTRITION
- ✓ RESEARCH METHODS
- ✓ EDUCATION TRACK
- ✓ INTERNATIONAL FORUMS AND MORE!

50
HOURS

Continuing
Professional
Education for
Registered
Dietitians



American
Society for
Nutrition

*Excellence in
Nutrition Research
and Practice*

www.nutrition.org



ASN Members – We Want to Hear from You!

Provide input into ASN activities at the following interactive sessions:

DIALOGUE SESSION WITH THE ASN BOARD OF DIRECTORS

Saturday, March 28, 10:00 – 11:00 AM

Boston Convention and Exhibition Center – Room 152

Share your thoughts, hopes and visions for the future.

SOCIETY ANNUAL BUSINESS MEETING

Saturday, March 28, 7:00 PM – 8:00 PM

Renaissance Boston Waterfront Hotel – Pacific Grand Ballroom ABC

Provide input into future ASN activities at this forward-looking session.

LISTENING SESSION: OPEN ACCESS JOURNAL DEVELOPMENT

Monday, March 30, 2015, 5:15 PM – 6:00 PM

Boston Convention and Exhibition Center – Room 150

Learn about a potential launch of an ASN open access journal.

BREAKFAST FROM THE INCOMING PRESIDENT

Tuesday, March 31, 7:00 AM – 8:00 AM

Renaissance Boston Waterfront Hotel – Outside Georges Room

Join the ASN Incoming President Patrick J. Stover, PhD for a light breakfast.

VOTE FOR PREFERRED LOCATIONS AND MEETING ELEMENTS FOR ASN'S INDEPENDENT ANNUAL MEETING PILOT

Saturday, March 28 – Tuesday, March 31, 7:30 AM – 5:30 PM

ASN Member and Attendee Lounge, Boston Conference and Exhibition Center, Room 155

Saturday, March 28 – Tuesday, March 31, 9:30 AM – 1:00 PM, 3:00 – 6:00 PM

ASN Office and Member Services Center, Renaissance Boston Waterfront Hotel, Georges

WELCOME TO THE AMERICAN SOCIETY FOR NUTRITION'S SCIENTIFIC SESSIONS & ANNUAL MEETING AT EXPERIMENTAL BIOLOGY 2015.

The 2015 Scientific Sessions is our most exciting meeting yet! With over 30 scientific symposia, 3 award lectures, 4 international forums, 16 opportunities for free professional development in the sponsored satellite programs, 8 exciting nutrition program tracks, and more than 2,000 original research presentations, we encourage you to check out as much as possible! All attendees are invited to take advantage of networking and social events in addition to the program.

Getting Around ASN's Scientific Sessions at EB 2015

- ✓ Please be sure to pick up the **Experimental Biology 2015 Program** and **Program Addendum** at the on-site registration area in the Boston Convention and Exhibition Center. The program includes a comprehensive listing of the oral presentations (pages 1-170); poster presentations (pages 171-452), special and ancillary functions (organized chronologically, pages 535-545; organized alphabetically, pages 546-558), and Exhibit Hall information (pages 465-534). The addendum contains program updates and errata.
- ✓ For highlights of daily events and session recaps, be sure to pick up ASN's **Nutrition Notes Daily**. Published on Sunday, Monday and Tuesday, this newspaper can be picked up at the locations highlighted below.
- ✓ Visit ASN at the following locations throughout the meeting:

ASN Office and Member Services Center

Renaissance Boston Waterfront, Georges

Hours: Saturday through Tuesday, 9:30 AM – 1:00 PM and 3:00 – 6:00 PM

Stop by the ASN Office and Member Services Center to check your membership status, join a Research Interest Section (RIS) and purchase a ticket to the **Fellows, 50-Year Members and Past Presidents Luncheon**.

ASN Booth and Bookstore

Boston Convention and Exhibition Center, Exhibit Hall, Booth #1053

Hours: Sunday through Tuesday, 9:00 AM – 4:00 PM

Get your ASN swag at the ASN Booth and Bookstore in the Exhibit Hall.

ASN Member & Attendee Lounge

Boston Convention and Exhibition Center, 155

Saturday through Tuesday, 7:30 AM – 5:30 PM

Relax with your peers and discuss the exciting research being presented away from the hustle and bustle of the conference.

Continuing Professional Education Credits

ASN (Provider #NS010) is accredited and approved by the Commission on Dietetic Registration (CDR) as a provider of Continuing Professional Education (CPE) programs for Registered Dietitians. Dietitians and dietetic technicians, registered should only claim credit commensurate with the extent of their participation in the activity. Certificates of Completion/Attendance will be provided after completion of an online evaluation that will be sent to registered attendees via email after the conference. For information, visit scientificsessions.nutrition.org.

STAY CONNECTED AT EB 2015



@nutritionorg
Join us #ExpBio



Conference Bloggers
www.nutrition.org/blog



Video Coverage
www.nutrition.org/youtube



Facebook
www.nutrition.org/facebook



EB 2015 iPhone App in the
App Store



EB 2015 Itinerary Builder at
<http://experimentalbiology.org>

SPECIAL EVENTS

The annual meeting features Society-wide opportunities to connect and network with your colleagues and peers. Opportunities for attendees to connect include receptions, business meetings and more. See below for a selection.

DIALOGUE SESSION WITH THE ASN BOARD OF DIRECTORS

Saturday, March 28, 10:00 AM – Boston Convention and Exhibition Center, 152

This session will provide ASN members the opportunity to speak directly with Board members on any topic, and for Board members to listen and have informal and constructive dialogue with the ASN community. Please join us and share your thoughts, hopes and visions for the future.

VOLUNTEER LEADERSHIP FORUM

Saturday, March 28, 11:00 AM – Boston Convention and Exhibition Center, 152

This forum is for current volunteers and those interested in serving, who wish to learn more about volunteers' roles within the Society. The forum will review volunteer responsibilities and provide light training. This event is at no additional cost to attendees.

FIRST-TIME ATTENDEE AND NEW MEMBER ORIENTATION

Saturday, March 28, 2:00 PM – Boston Convention and Exhibition Center, 150

This event is designed to assist first-time attendees in taking full advantage of the activities at EB 2015. The event is also designed to help new members learn more about ASN membership benefits and communities, and how to access ASN services. This event is at no additional cost to attendees.

EMERGING LEADERS IN NUTRITION SCIENCE POSTER COMPETITION

Saturday, March 28, 5:00 PM – Boston Convention and Exhibition Center, Ballroom East

New this year, ASN is conducting the Emerging Leaders in Nutrition Science Poster Competition to highlight the very best research submitted by students and young investigators to ASN's Scientific Sessions. Most of ASN's 15 Research Interest Sections as well as the Global Nutrition Council and the Medical Nutrition Council have selected finalists to participate in this competition. Please join us for this first-time event!

SOCIETY ANNUAL BUSINESS MEETING

Saturday, March 28, 7:00 PM – Renaissance Boston Waterfront, Pacific Grand Ballroom ABC

Join us for the 79th Annual Business Meeting. During this special event, you have the opportunity to hear from ASN leaders on the latest on ASN programs. New this year, the Business Meeting will feature breakout sessions, for attendees to discuss specific initiatives.

UNIVERSITY MIXER AND MEMBERSHIP RECEPTION

Saturday, March 28 8:00 PM – Renaissance Boston Waterfront, Pacific Grand Ballroom DEFGH

This highly attended and anticipated networking event kicks off the start of ASN's Scientific Sessions. This popular event for nutrition registrants will feature music, hors d'oeuvres and a cash bar. Some university departments host tables for alumni, faculty and students. This event is at no additional cost to ASN members and attendees.

AWARDS CEREMONY

Sunday, March 29, 6:00 PM – Renaissance Boston Waterfront, Pacific Grand Ballroom ABCD

The ASN annual awards program, hosted by ASN and the ASN Foundation, recognizes the accomplishments of nutrition scientists from around the globe. Join us as we celebrate and recognize our 2015 award winners. This event is at no additional cost to attendees.

FELLOWS, 50-YEAR MEMBERS AND PAST PRESIDENTS LUNCHEON

Monday, March 30, 11:30 AM – Renaissance Boston Waterfront, Atlantic Ballroom 1

The Class of 2015 Fellows will be inducted – the highest honor that ASN bestows. In addition to celebrating the new class of Fellows, the event will also honor ASN's fifty-year members and past presidents. This event requires the purchase of a ticket (\$30); inquire at the ASN Office (Georges).

LISTENING SESSION: OPEN ACCESS JOURNAL DEVELOPMENT

Monday, March 30, 5:15 PM – Boston Convention and Exhibition Center, 150

Learn more and share your feedback regarding the development of an ASN open access journal.

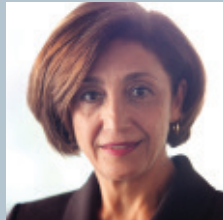
The American Society for Nutrition 2015 Presidential Symposium

Nutrition and Developmental Origins of Health
and Disease
Sunday, March 29, 2015 • 10:30 AM
Boston Convention & Exhibition Center – Grand
Ballroom East

SUPPORTED BY MEAD JOHNSON PEDIATRIC NUTRITION INSTITUTE

CHAIR

Simin Nikbin Meydani, DVM,
PhD, President, American Society
for Nutrition, Director, USDA/HNRC at
Tufts University
Boston, MA



PRESENTATIONS

Nutritional influences on human
developmental epigenetics

Robert A. Waterland, PhD

Associate Professor

Depts. of Pediatrics and Molecular &
Human Genetics

Baylor College of Medicine

USDA/ARS Children's Nutrition Research Center

Houston, TX



Early life gut microflora and
immune system development

Dingding An, PhD

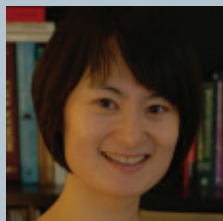
Assistant Professor of Pediatrics

Division of Infectious Diseases

Boston Children's Hospital

Harvard Medical School

Boston, MA



Fructose, pregnancy and
later life impact

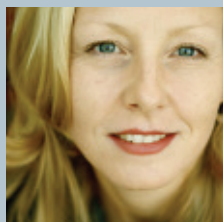
Deborah Sloboda, PhD

Associate Professor

Biochemistry and Biomedical Sciences

McMaster University

Canada



Paternal nutrition and
transgenerational health
outcomes

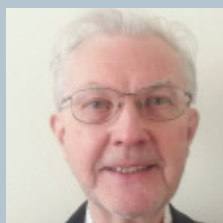
Lars O. Bygren, MD, PhD

Professor

Department of Community Medicine
and Rehabilitation

University of Umeå

Sweden



SCIENTIFIC COUNCIL SESSIONS & EVENTS

NUTRITIONAL SCIENCES COUNCIL BUSINESS MEETING AND BREAKFAST

Saturday, March 28, 7:00 AM – Boston Convention
and Exhibition Center, 150

MEDICAL NUTRITION COUNCIL BUSINESS MEETING

Monday, March 30, 1:00 PM – Boston Convention and
Exhibition Center, 154

GLOBAL NUTRITION COUNCIL BUSINESS MEETING AND THE KELLOGG PRIZE FOR INTERNATIONAL NUTRITION RESEARCH LECTURE

Monday, March 30, 6:30 PM – Renaissance Boston
Waterfront, Pacific Grand Ballroom ABCD

The Kellogg Prize for International Nutrition Research
is supported by an unrestricted educational grant from
the Kellogg Company. Lecturer Gretel H. Pelto, PhD will
present "Beliefs, knowledge and environment: Using
anthropology to inform nutrition action."

GLOBAL NUTRITION COUNCIL RECEPTION

Monday, March 30, 8:00 PM – Renaissance Boston
Waterfront, Atlantic Ballroom 1



RESEARCH INTEREST SECTIONS (RIS) MEETINGS AND EVENTS

Listed in chronological order

CAROTENOID AND RETINOID INTERACTIVE GROUP (CARIG) ANNUAL SYMPOSIUM

Fri. 1:00 PM – Renaissance Boston Waterfront, Pacific Grand Ballroom A/B/C

CARIG POSTER COMPETITION AND RECEPTION

Fri. 6:30 PM – Renaissance Boston Waterfront, Pacific Grand Ballroom D

RIS CHAIRS LUNCHEON BY INVITATION ONLY

Sat. 12:00 PM – Boston Convention and Exhibition Center, 150

EXPERIMENTAL ANIMAL NUTRITION BUSINESS MEETING

Sat. 2:00 PM – Boston Convention and Exhibition Center, 156A

ENERGY AND MACRONUTRIENT METABOLISM HOT TOPICS SEMINAR: MECHANISMS OF NUTRIENT-INDUCED MITOCHONDRIAL STRESS IN OBESITY AND DIABETES

Sat. 3:00 PM – Boston Convention and Exhibition Center, 152

EMERGING LEADERS IN NUTRITION SCIENCE POSTER COMPETITION

Sat. 5:00 PM – Boston Convention and Exhibition Center, Grand Ballroom East

ENERGY AND MACRONUTRIENT METABOLISM BREAKFAST AND HOT TOPIC PRESENTATION

BY INVITATION ONLY

Sun. 6:45 AM – Boston Convention and Exhibition Center, 150

NUTRITION TRANSLATION BUSINESS MEETING AND NETWORKING RECEPTION

Sun. 12:30 PM – Boston Convention and Exhibition Center, 150

VITAMINS AND MINERALS FORUM AND BUSINESS MEETING

Sun. 12:45 PM – Boston Convention and Exhibition Center, 156A

DIET AND CANCER BUSINESS MEETING AND FUNDING UPDATE FROM NIH AND AICR

Sun. 1:00 PM – Boston Convention and Exhibition Center, 156C

NUTRIENT-GENE INTERACTIONS BUSINESS MEETING

Sun. 1:30 PM – Boston Convention and Exhibition Center, 153B

NUTRITIONAL EPIDEMIOLOGY BUSINESS MEETING AND MENTORING EVENT

Sun. 4:00 PM – Renaissance Boston Waterfront, Atlantic Ballroom 1

NUTRITIONAL IMMUNOLOGY BUSINESS MEETING

Sun. 4:00 PM – Renaissance Boston Waterfront, Spectacle

AGING AND CHRONIC DISEASE BUSINESS MEETING

Mon. 7:00 AM – Renaissance Boston Waterfront, Caspian

LACTATION AND ISRHML BUSINESS MEETING

Mon. 12:30 PM – Boston Convention and Exhibition Center, 150

COMMUNITY AND PUBLIC HEALTH NUTRITION BUSINESS MEETING AND HOT TOPIC SESSION

Mon. 12:45 PM – Boston Convention and Exhibition Center, 153C

DIETARY BIOACTIVE COMPONENTS HOT TOPICS SEMINAR: THE ROLE OF DIETARY BIOACTIVE COMPONENTS IN BONE HEALTH AND DEVELOPMENT

Mon. 12:45 PM – Boston Convention and Exhibition Center, 152

NUTRITION EDUCATION AND BEHAVIORAL SCIENCE BUSINESS MEETING AND SPECIAL EVENT—"DIGGING DEEPER:" AN OVERVIEW OF QUALITATIVE DATA COLLECTION AND ANALYSIS

Mon. 3:00 PM – Boston Convention and Exhibition Center, 150

OBESITY BUSINESS MEETING AND HOT TOPIC DISCUSSION: THE FUTURE OF OBESITY TREATMENT

Tues. 11:30 AM – Renaissance Boston Waterfront, Pacific Grand Ballroom F/G

PEDIATRIC NUTRITION RIS INTEREST MEETING

Tues. 1:45 PM – Boston Convention and Exhibition Center, 158

ASN: Advancing Nutrition Research & Practice Globally

The American Society for Nutrition (ASN) is a global organization that represents more than 5,000 members who work in academia, practice, government and industry across more than 80 different countries.



 **1 IN 5** MEMBERS OUTSIDE U.S.

60% TOTAL SUBMISSIONS
OUTSIDE NORTH AMERICA (2013, JM)

**AUTHORS HAIL FROM
MORE THAN
50% OF NATIONS
RECOGNIZED BY U.N.**
(2013, AJCN)

42% of ASN's web visitors outside U.S.
(2–3 million hits per month, 2014)

ASN: Leading Diverse Partnerships across the World

Join us for EB 2015 **International Forums** highlighting emerging areas of research in other countries. International Forums provide an opportunity for global nutrition societies to review the current status of nutrition research and education in their country, and to discuss region-specific topics with other nutrition scientists.

Korea

Organized by Korean
Nutrition Society

Sun., March 29,
3:00–5:00 pm

Brazil

Organized by International Colleges for
the Advancement of Nutrology

Mon., March 30,
10:30–5:00 pm

China

Organized by Chinese
Nutrition Society

Tues., March 31,
8:00–10:00 am

Taiwan

Organized by Nutrition Society
of Taiwan

Tues., March 31,
12:45–2:45 pm

Did you know?

ASN members with a mailing address in a country identified by the World Bank as a low, low-middle or higher-middle income economy are eligible for a reduced dues rate.



Stop by the ASN Booth #1053
Sunday–Tuesday, 9:00–4:00 to learn
more about ASN's global efforts

BOSTON
SCIENTIFIC SESSIONS &
ANNUAL MEETING
at Experimental Biology 2015



American Society for Nutrition
Excellence in Nutrition Research and Practice
www.nutrition.org



STUDENT HIGHLIGHTS

CLINICAL EMERGING LEADERS AWARD COMPETITION

ORGANIZED BY MEDICAL NUTRITION COUNCIL

Saturday, March 28

8:00-9:30 a.m.

Boston Convention and Exhibition Center, Room 151 A/B

YOUNG MINORITY INVESTIGATOR ORAL COMPETITION

ORGANIZED BY MINORITY & DIVERSITY AFFAIRS COMMITTEE
SUPPORTED BY DSM NUTRITIONAL PRODUCTS

Saturday, March 28

11:30 a.m.-1:00 p.m.

Boston Convention and Exhibition Center, Room 151 A/B

GRADUATE STUDENT RESEARCH AWARD COMPETITION

ORGANIZED BY NUTRITIONAL SCIENCES COUNCIL

Saturday, March 28

1:30-4:30 p.m.

Boston Convention and Exhibition Center, Room 151 A/B

FIRST-TIME ATTENDEE AND NEW MEMBER ORIENTATION

ORGANIZED BY MEMBERSHIP COMMITTEE

Saturday, March 28

2:00-3:00 p.m.

Boston Convention and Exhibition Center, Room 150

EMERGING LEADERS IN NUTRITION SCIENCE POSTER COMPETITION

SUPPORTED BY PEPSICO

Saturday, March 28

5:00-7:00 p.m.

Boston Convention and Exhibition Center, Ballroom East

UNIVERSITY MIXER AND MEMBERSHIP RECEPTION

Saturday, March 28

8:00-10:00 p.m.

Renaissance Boston Waterfront, Pacific Grand Ballroom D/E/F/G/H

Nutrition madness comes to Boston! Visit our special tables for networking hosted by universities, ASN member groups and partners.

GRADUATE STUDENT BREAKFAST

ORGANIZED BY STUDENT INTEREST GROUP AND SUPPORTED BY NATIONAL DAIRY COUNCIL

Sunday, March 29

6:45-8:00 a.m.

Renaissance Boston Waterfront, Atlantic Ballroom 1

MEET THE ASN JOURNAL EDITORS

Sunday, March 29

12:45-2:45 p.m.

Boston Convention and Exhibition Center, Room 152

STUDENT "MEET THE FELLOWS"

ORGANIZED BY STUDENT INTEREST GROUP
SUPPORTED BY PEPSICO

Monday, March 30

10:30-11:30 a.m.

Renaissance Boston Waterfront, Atlantic Ballroom 2

Recognition as a Fellow of the Society is the highest honor ASN bestows. Network with Fellows and learn about their distinguished careers in the field of nutrition.

ASN SPEED MENTORING FOR STUDENTS

ORGANIZED BY YOUNG PROFESSIONAL & STUDENT INTEREST GROUPS
SUPPORTED BY PEPSICO

Monday, March 30

7:30-9:30 p.m.

Renaissance Boston Waterfront, Pacific Grand Ballroom H

Walk-up mentors are welcome at on-site check-in.

YOUNG EXPERIMENTAL SCIENTISTS (Y.E.S.) MIXER

Monday, March 30

9:00-11:30 p.m.

Westin Boston Waterfront, Galleria

ASN MDAC MARC TRAVEL AWARDEES POSTER SESSION AND NETWORKING BREAKFAST

ORGANIZED BY MINORITY AND DIVERSITY AFFAIRS COMMITTEE
SUPPORTED BY DSM NUTRITIONAL PRODUCTS

Tuesday, March 31

7:00-8:30 a.m.

Boston Convention and Exhibition Center, Room 150

FASEB CAREER RESOURCES

Saturday, March 28-Tuesday, March 31

Boston Convention and Exhibition Center, Exhibit Hall, Career Center

There are a number of additional career resources and programs available for students at EB 2015.

Get ahead in your career with résumé critiques, and workshops like the following:

- Transforming your CV
- Networking: Is it Only Who You Know?
- Building Your Skills, Networking, and Informational Interviews

POSTDOCS & YOUNG PROFESSIONALS HIGHLIGHTS

POSTDOCTORAL RESEARCH AWARD COMPETITION

ORGANIZED BY YOUNG PROFESSIONAL INTEREST GROUP
ENDOWED BY DUPONT NUTRITION AND HEALTH

Saturday, March 28

9:30-11:30 a.m.

Boston Convention and Exhibition Center, Room 153 A/B

Six finalists will present; the 2015 grand prize winner will be selected and announced at the ASN Awards Ceremony.

EMERGING LEADERS IN NUTRITION SCIENCE POSTER COMPETITION

SUPPORTED BY PEPSICO

Saturday, March 28

5:00-7:00 p.m.

Boston Convention and Exhibition Center, Ballroom East

ASN BUSINESS MEETING

Saturday, March 28

7:00-8:00 p.m.

Renaissance Boston Waterfront, Pacific Grand Ballroom A/B/C

MEMBER RECEPTION & UNIVERSITY MIXER

Saturday, March 28

8:00-10:00 p.m.

Renaissance Boston Waterfront, Pacific Grand Ballroom D/E/F/G/H

Nutrition madness comes to Boston! Visit our special tables for networking hosted by universities, ASN member groups and partners.

MEET THE ASN JOURNAL EDITORS

Sunday, March 29

12:45-2:45 p.m.

Boston Convention and Exhibition Center, Room 152

ASN AWARDS CEREMONY

Sunday, March 29

6:00-7:30 p.m.

Renaissance Boston Waterfront, Pacific Grand Ballroom A/B/C/D

This Ceremony annually recognizes the most noted scientists and professionals in our field for outstanding research and achievements.

BEING “SOCIAL:” HOW SCIENTISTS CAN FIND THEIR WAY IN A 24-HOUR DIGITAL WORLD

ORGANIZED BY PUBLIC INFORMATION COMMITTEE & YOUNG PROFESSIONAL INTEREST GROUP

Monday, March 30

8:00-10:00 a.m.

Boston Convention and Exhibition Center, Room 151 A/B

ASN SPEED MENTORING FOR STUDENTS

ORGANIZED BY YOUNG PROFESSIONAL & STUDENT INTEREST GROUPS
SUPPORTED BY PEPSICO

Monday, March 30

7:30-9:30 p.m.

Renaissance Boston Waterfront, Pacific Grand Ballroom H

Walk-up mentors are welcome at on-site check-in.

ASN POSTDOC & YOUNG PROFESSIONAL NETWORKING EVENT

ORGANIZED BY YOUNG PROFESSIONAL INTEREST GROUP

Monday, March 30

9:30-10:30 p.m.

Renaissance Boston Waterfront, Pacific Grand Ballroom F/G

This reception is open to all postdoctoral fellows, medical residents and young professional members of ASN.

EB 2015 YOUNG EXPERIMENTAL SCIENTISTS (Y.E.S.) MIXER

Monday, March 30

9:00-11:30 p.m.

Westin Boston Waterfront, Galleria

ASN MDAC MARC TRAVEL AWARDEES POSTER SESSION AND NETWORKING BREAKFAST

ORGANIZED BY MINORITY AND DIVERSITY AFFAIRS COMMITTEE
SUPPORTED BY DSM NUTRITIONAL PRODUCTS

Tuesday, March 31

7:00-8:30 a.m.

Boston Convention and Exhibition Center, Room 150

“ESTABLISHING YOURSELF AS AN EXPERT”

ORGANIZED BY YOUNG PROFESSIONAL INTEREST GROUP

Tuesday, March 31

10:30 a.m.-12:30 p.m.

Boston Convention and Exhibition Center, Room 151 A/B

FASEB CAREER RESOURCES

Saturday, March 28-Tuesday, March 31

Boston Convention and Exhibition Center, Exhibit Hall, Career Center

There are a number of additional career resources and programs available for postdocs & young professionals at EB 2015. Get ahead in your career with résumé critiques, career counseling and workshops like the following:

- Negotiation Strategies for Scientists
- Beyond the Bench: Preparing for your Career Transition in the Life Sciences
- Overcoming Communication Barriers

PROGRAM TRACKS

This year's scientific symposia integrate basic, clinical, population and translational science organized around the following program tracks:

PEDIATRIC NUTRITION AND EARLY DEVELOPMENT

SUPPORTED BY THE MEAD JOHNSON PEDIATRIC NUTRITION INSTITUTE

The Presidential Symposium: Nutrition and Developmental Origins of Health and Disease

Integrated Nutrition and Early Child Development Interventions: Preventing Health and Economic Disparities

An Interdisciplinary Examination of Potential Effects of Maternal Obesity on Lactation Physiology and the Human Milk Microbiome

Pediatric Neurocognitive Development: Emerging Insights and Applications in Nutrition

Maternal/Fetal Nutrition and Programming: What Have We Learned from Farm Animal Models?

BIOCHEMICAL, MOLECULAR AND GENETIC MECHANISMS

Translational and Transformational Concepts in Amino Acid Sensing

Diet and Immunometabolism

HUMAN NUTRITION AND METABOLISM

SUPPORTED BY PEPSICO

Gut Microbes and the Brain: What Is the Effect on Human Behavior?

Is "When" We Eat as Important as "What" We Eat? - Chronobiological Aspects of Food Intake

Moderate Alcohol Use, Nutrition and Chronic Diseases: What We Know and Where to Go Next

Human Variability & Physiological Extremes: Blessing or Curse?

Resistant Starch, Microbiota and Gut Health

Dietary Fiber, Gut Microbiota and Kidney Function

DIET AND NON-COMMUNICABLE DISEASES

SUPPORTED BY PEPSICO

Improving Cardio-Skeletal Health by Exploring the Heart - Bone Connection

Determinants of Disease Risk in the Postprandial Period

Low-Calorie Sweeteners and Health: What Does the Science Tell Us?

Nutritional Approaches for Osteosarcopenic Obesity: Interrelationships between Bone, Muscle, and Fat

"One Nutrition": Clinical Nutrition Across Species

GLOBAL AND PUBLIC HEALTH NUTRITION

Approaches to Account for the Effects of Inflammation on Nutrient Biomarkers: Nutrition Determinants of Anemia (BRINDA) Project

Creating the Future of Evidence-based Nutrition Recommendations, Using Lipid Research Case Studies (ILSI)

Food and Nutrition Board Update: New Directions in Food, Nutrition, and Population Health

Do We Need Preconception Nutrition Interventions to Improve Birth Outcomes Beyond the Prevention of Neural Tube Defects? Current Knowledge and Future Directions

RESEARCH METHODS

What's New in Natural Products Analysis? Cutting-edge Methods and Available Resources for Nutrition Research

EDUCATION TRACK

Establishing Yourself as an Expert

Research Reporting in the 21st Century: How it is Different and Why You Should Care

History of Nutrition: The Long Road Leading to the Dietary Reference Intakes

The eNutrition Academy: Supporting a New Generation of Nutritional Scientists Around the World

Being "Social": How Scientists Can Find their Way in a 24-Hour Digital World

Join us for the American Society for Nutrition's

EMERGING LEADERS IN NUTRITION SCIENCE COMPETITION

Recognizing the highest quality research presented by students and young investigators at

***ASN's Scientific Sessions and Annual Meeting
at Experimental Biology***

ORGANIZED BY ASN'S RESEARCH INTEREST SECTIONS AND COUNCILS

**Saturday, March 28, 5:00 – 7:00 PM
Boston Convention and Exhibition Center**

Grand Ballroom East

Thank you to our Premier Sponsor



SPECIAL THANKS TO OUR TRAVEL AWARD SPONSORS

Abbott Nutrition · Almond Board of California · American Institute for Cancer Research · Amway/Nutrilite · California Dried Plum Board · Center for Advanced Functional Foods Research and Entrepreneurship at Ohio State University · Council for Responsible Nutrition · Craft Technologies · DuPont Nutrition and Health · Hass Avocado Board · Herbalife Nutrition Institute · International Society for Research on Human Milk and Lactation · Kemin Industries, Inc. · Kraft Foods Group · McCormick Science Institute · Mead Johnson Nutrition · Mondelez International Inc. · Monsanto Company · National Cattlemen's Beef Association · National Confectioners Association · National Dairy Council · Nestlé Nutrition Institute · Pfizer, Inc. · Shaklee · Sight and Life/DSM Nutritional Products · Teklad Diets/Harlan Laboratories, Inc.



**American
Society for
Nutrition**

*Excellence in
Nutrition Research
and Practice*

Official Scientific Program of the American Society for Nutrition's Scientific Sessions at EB 2015 - Boston, Massachusetts

All rooms listed are in the Convention Center unless otherwise noted.

SATURDAY, March 28, 2015		SUNDAY, March 29, 2015			
	8:00 - 10:00 AM	10:30 AM - 12:30 PM	12:45 - 2:45 PM	3:00 - 5:00 PM	
Ballroom East	8:00 - 10:00 AM Creating the Future of Evidence-based Nutrition Recommendations Using Lipid Research Case Studies (ILSI) <i>K.H. Rubin and J.T. Dwyer</i>	10:30 AM - 12:30 PM	12:45 - 2:45 PM	3:00 - 5:00 PM	Human Variability & Physiological Extremes: Blessing or Curse? <i>S.H. Adams and D.B. Allison</i>
157 ABC		Maternal/Fetal Interactions: Looking at Various Animal Models <i>G.M. Hill and T.A. Davis</i>	8:00 - 10:00 AM Translational and Transformatioal Concepts in Amino Acid Sensing <i>S. Hutson and T.G. Anthony</i>	10:30 AM - 12:30 PM Presidential Symposium: Nutrition and Developmental Origins of Health and Disease <i>S.N. Meydani</i>	Do We Need Preconception Nutrition Interventions to Improve Birth Outcomes Beyond the Prevention of Neural Tube Defects? <i>U. Ramakrishnan and J.C. King</i>
Education Track Room 151 AB	8:00 AM - 9:30 AM Clinical Emerging Leaders Award Competition		11:30 - 4:30 PM ASN Young Minority Investigator Oral Competition	12:45 - 2:45 PM NOF/ASN Statement: Peak Bone Mass Development and Lifestyle Factors	International Forum - Korea
152			Global Nutrition: Understanding and Predicting Program Impact		EBM: Protein and Amino Acid Metabolism
153A		9:30 AM - 11:30 PM The Postdoctoral Research Award Competition			DBC: Mechanisms of Action and Molecular Targets of Dietary Bioactive Components II
153B					Nutr: Epi: Innovation and Validation of Dietary Assessment Tools and Their Applications
153C	Global Nutrition: Nutrition and Cognitive and Neurological Outcomes	Global Nutrition: Recent Insights into Growth and Growth Monitoring			Comm Pub Hlth Nutr: Food Environment
154					Lactation: Lactation and Maternal and Infant Health
156A		Carotenoids and Retenoids in Human Health			Vit Min: B Vitamins and One-Carbon Metabolism
156B					Nutr Edu: Childhood Obesity Prevention
156C					Animal: Comparative Animal Nutrition and Physiology

This overview includes sessions programmed by ASN's Scientific Program Committee.

View ASN's Society Highlights and Guest Society Highlights in the onsite program for Council, RIS and other activities.

Official Scientific Program of the American Society for Nutrition's Scientific Sessions at EB 2015 - Boston, Massachusetts

All rooms listed are in the Convention Center unless otherwise noted.

		MONDAY, March 30, 2015				TUESDAY, March 31, 2015		
		8:00 - 10:00 AM	10:30 AM - 12:30 PM	1:45 - 2:45 PM	3:00 - 5:00 PM	8:00 - 10:00 AM	10:30 AM - 12:30 PM	12:45 - 2:45 PM
Ballroom East		Dietary Fiber, Gut Microbiota and Kidney Function <i>C.J. Ketchum and C. Pelkman</i>	Low-Calorie Sweeteners and Health: What Does the Science Tell Us? <i>D. Greenberg and J.D. Fernstrom</i>	G.A. Leveille Lecture 1:45-2:45 PM	Gut Microbes and the Brain: What Is the Effect on Human Behavior? <i>E. Mayer and W. A. Walker</i>	Diet and Immunometabolism <i>S. R. Shaikh and L. Coleman</i>	An Interdisciplinary Examination of Potential Effects of Maternal Obesity on Lactation Physiology and the Human Milk Microbiome <i>C. Lovelady and L. Nommsen-Rivers</i>	W.O. Atwater Lecture 12:45-1:45 PM
157 ABC		Integrated Nutrition and Early Child Development Interventions: Preventing Health and Economic Disparities <i>K. Hurley and S. Fernandez-Rao</i>	Research Reporting in the 21 Century: How it is Different and Why You Should Care <i>N. Fukagawa</i>		Approaches to Account for the Effects of Inflammation on Nutrient Biomarkers: Nutrition Determinants of Anemia (BRINDA) Project <i>R. Flores and D. Raiten</i>	Is "When" We Eat as Important as "What" We Eat? - Chronobiological Aspects of Food Intake <i>L. Sanders and C.E. O'Neil</i>	Food and Nutrition Board Update: New Directions in Food, Nutrition and Population Health <i>A. Yaktine and S. P. Murphy</i>	
151 AB		Being "Social": How Scientists Can Find their Way in a 24-Hour Digital World <i>M.A. Johnson and V. Vieira-Potter</i>	<i>International Forum- ICAN/South America</i>			<i>International Forum-China</i>	Establishing Yourself as an Expert <i>E. Ciappio and M. N. Henderson</i>	<i>International Forum-Taiwan</i>
152		EMM: Lipid and Fatty Acid Metabolism and Transport	EMM: Obesity and the Metabolic Syndrome		EMM: Protein Intake and Health Implications	EMM: Carbohydrate Metabolism	EMM: Metabolic Phenotyping, Metabolomics and Biomarkers	EMM: Dietary Fatty Acids and Health
153A		DBC: Bioavailability, Metabolism, and Biomarkers of Dietary Bioactive Components	DBC: Dietary Bioactive Components and Markers of Chronic Disease: Human Intervention Studies		DBC: Effects of Dietary Bioactive Components in Animal Models of Chronic Disease Risk	DBC: Dietary Bioactive Compounds of Medicinal, Functional, and Fermented Foods	DBC: Antioxidant and Anti-Inflammatory Effects of Dietary Bioactive Components	DBC: Effects of Dietary Bioactive Components in Animal Models of Obesity and Cardiometabolic Risk
153B		Nutr: Epi Research with Dietary Supplements and Bioactive Components	Nutr: Epi: Nutrition and Chronic Disease Epidemiology		Nutr: Epi: Advancing Nutritional Epidemiology with Public Use and Commercial Data Sets	Nutr: Epi: Epidemiologic Methods in Examining Health Outcomes in Diverse Populations	Global Nutrition: Understanding Pathways to Intervention Impact	Global Nutrition: Recent Advances in Biomarker Development and Use
153C		Comm Pub Hlth Nutr: Health Disparities and Promoting Health in Diverse Populations	Comm Pub Hlth Nutr: Food Security and Its Connections to Nutrition and Health		Comm Pub Hlth Nutr: Policy and Systems Approaches in Community and Public Health Nutrition	Comm Pub Hlth Nutr: Food Environment II	Nutrition Across the Lifespan (Co-sponsor: Aging, Obesity and Nutrition Translation)	Nutrition Across the Lifespan: Early Childhood Nutrition
154		Nutr Immunology: Nutrition, Immunity and Infection	MNC: Nutrition and the Microbiome		MNC: Interventions for the Treatment and Prevention of Nutrition-Related Diseases	Aging: Risk Factor Modification for Healthy Aging	MNC: Nutrition and Inflammation	Nutrient-Gene Interactions: Obesity and Inflammation
156A		Vit Min: Water and Fat Soluble Vitamins and Chronic Disease	Vit Min: Micronutrient Interventions		Nutrient-Gene Interactions: Genomics, Proteomics, and Metabolomics	Nutrition Policies, Programs, and Public-Private Partnerships	Diet and Cancer: Fat versus Fiber in Colon Cancer: Opposite in the End?	Diet and Cancer: Uncovering the Role of Diet in Cancer Prevention: Population Based Studies
156B		Obesity: Chronic Diseases	Nutr Edu: Nutrition Education and Behavior Change		Obesity: Childhood Obesity Management	Obesity: Gut Microbiome and Obesity	Nutr Edu: Developing Healthy Eating and Physical Activity Behaviors Across the Lifespan	
156C			Animal: Animal Models of Nutrition and Intestinal Disease					

This overview includes sessions programmed by ASN's Scientific Program Committee.

View ASN's Society Highlights and Guest Society Highlights in the onsite program for Council, RIS and other activities.

Official Scientific Program of the American Society for Nutrition's Scientific Sessions at EB 2015 - Boston, Massachusetts

All rooms listed are in the Convention Center unless otherwise noted.

WEDNESDAY, April 1, 2015		
	8:00 – 10:00 AM	10:30 AM – 12:30 PM
Ballroom East	Resistant Starch, Microbiota and Gut Health <i>D.F. Birt</i>	Moderate Alcohol Use, Nutrition and Chronic Diseases: What We Know and Where to Go Next <i>N. Parekh and L. M. Troy</i>
157 ABC	What's New in Natural Products Analysis? Cutting-edge Methods and Available Resources for Nutrition Research <i>J. M. Harnly and B.C. Sorkin</i>	"One Nutrition": Clinical Nutrition Across Species <i>L.M. Freeman and S.N. Meydani</i>
ASN Sponsored Satellite Programs: Satellite programs are planned and conducted by external groups in conjunction with the American Society for Nutrition's Scientific Sessions and Annual Meeting.		
Friday	Whole-Milk Dairy Foods in Nutrition and Health: An Evaluation of the Current State of the Science Organized and sponsored by the National Dairy Council 8:30 am – 12:00 pm Renaissance Boston Waterfront Hotel, Pacific Grand Ballroom E	
	Science and Policy: Adopting a Fruitful Vegetable Encounter for Our Children Organized and sponsored by the Alliance for Potato Research and Education 1:00 pm – 5:00 pm Renaissance Boston Waterfront Hotel, Pacific Grand Ballroom FGH	
Saturday	Sweeteners and Health: Current Understandings, Recent Research Findings and Directions for Future Research Organized and sponsored by the Rippe Lifestyle Institute 6:30 am – 8:00 am Boston Convention & Exhibition Center, 153 AB	
	Current Perspective on Protein Quality and Practical Implications for Policy Organized and sponsored by DuPont Nutrition and Health 12:45 pm – 2:45 pm Boston Convention & Exhibition Center, 153 AB	
Sunday	Oats: More Than Just a Whole Grain Organized and sponsored by PepsiCo 6:30 am – 8:00 am Renaissance Boston Waterfront Hotel, Pacific Grand Ballroom E	
	Running on Empty: Is There a Metabolic or Cognitive Benefit to the Morning Meal? Organized and sponsored by the Kellogg Company 6:30 am – 8:00 am Renaissance Boston Waterfront Hotel, Pacific Grand Ballroom ABCD	
Monday	A Healthy Approach to Dietary Fat Consumption: Understanding the Science and Taking Action to Clear Up Consumer Confusion Organized and sponsored by the Hass Avocado Board 6:30 am – 8:00 am Renaissance Boston Waterfront Hotel, Pacific Grand Ballroom D	
Tuesday	Pairing Nuts and Dried Fruit for Cardiometabolic Health Organized and sponsored by the Sun-Maid Growers of California and American Pistachio Growers 6:30 am – 8:00 am Boston Convention & Exhibition Center, 52 A	
	Smart Snacking: When Science Meets Nutrition Organized and sponsored by PepsiCo 6:30 am – 8:00 am Renaissance Boston Waterfront Hotel, Atlantic Ballroom 123	
Wednesday	National Food and Nutrition Policy: Balancing the Role of Research, Nutrition Science and Public Health Organized and sponsored by the Corn Refiners Association 6:30 am – 8:00 am Boston Convention & Exhibition Center, 151 AB	
	Phenotypic Flexibility Organized and sponsored by Nutritech, a European Commission-funded Project 9:00 am – 12:30 pm Boston Convention & Exhibition Center, 151 AB	

Official Scientific Program of the American Society for Nutrition's Scientific Sessions at EB 2015 - Boston, Massachusetts

All rooms listed are in the Convention Center unless otherwise noted.

Sunday Posters:	Monday Posters:	Tuesday Posters:
<ul style="list-style-type: none"> Global Nutrition: Anthropometry Lactation: Relationships of Maternal Diet and Health to Lactation Performance and Infant Health Lactation: Predictors of Lactation Initiation and Duration; and Interventions to Improve Lactation Success Lactation: Bioactive Components and Other Milk Constituents and Their Effect on the Infant Lactation: Biology of Lactogenesis, Lactation and Milk Composition Comm Pub Hlth Nutr: Community and Public Health Nutrition Interventions Comm Pub Hlth Nutr: Food Security and Its Connections to Nutrition and Health Nutr. Epi.: Research with Dietary Supplements and Bioactive Components Nutr. Epi.: Advancing Nutritional Epidemiology with Public Use and Commercial Data Sets Aging: Risk Factor Modification for Cardiometabolic Health and Chronic Disease Aging: Nutritional Needs and Assessment in Older Adults/Populations Nutrition Across the Lifespan: Nutrition and Reproductive Health - MNC: Personalized Nutrition MNC: Prenatal Nutrient Programming in Humans Nutr Immunology: Nutritional Immunology EMM: Energy Balance, Macronutrients and Weight Management EMM: Obesity and the Metabolic Syndrome (Co-sponsor: Obesity RIS) EMM: Carbohydrate Metabolism EMM: Diet and/or Exercise Regulation of Food Intake (Co-sponsor: Obesity RIS) EMM: Dietary Fatty Acids and Health EMM: Protein Intake and Health Implications Obesity: Diet, Devices, Medications and Surgery Obesity: Gut Microbiome and Obesity Obesity: Chronic Diseases CARIG: Carotenoids and Health/ Carotenoids & Retinoids Molecular Mechanisms of Action CARIG: Bioavailability and Metabolism of Carotenoids and Vitamin A CARIG: Biofortification of Staple Crops with Micronutrients DBC: Bioavailability, Metabolism and Biomarkers of Dietary Bioactive Components DBC: Mechanisms of Action and Molecular Targets of Dietary Bioactive Components DBC: Effects of Dietary Bioactive Components on Experimental Models of Chronic Disease Risk 	<ul style="list-style-type: none"> Global Nutrition: Micronutrients Nutrition and Sustainability Nutr Edu: Childhood Obesity Prevention Nutr Edu: Developing Healthy Eating and Physical Activity Behaviors Across the Lifespan Sports Nutr: Nutrition, Dietary Supplements and Human Performance Dairy and Yogurt: Health and Nutrition Effects Nutr. Epi.: Epidemiologic Methods in Examining Health Outcomes in Diverse Populations (Co-sponsor: Minority and Diversity Affairs Committee) Nutr. Epi.: Epidemiological Research Addressing Diet and Health Outcomes Aging: Nutrition and Sarcopenia Aging: Nutrition and Osteoporosis Nutr Trans: Nutrition Science for Public Policy, Practice and the Consumer Nutr Trans: Food Science and Technology in Nutrition Nutrition Policies and Programs: Implementation, Evaluation, and Monitoring EMM: Protein and Amino Acid Metabolism EMM: Lipid and Fatty Acid Metabolism and Transport EMM: Energy and Macronutrient Metabolism and the Gut EMM: Metabolic Phenotyping, Metabolomics and Biomarkers Obesity: Macronutrients and Obesity Obesity: Body Composition Nutrient-Gene Interactions: Genomics, Proteomics, and Metabolomics Nutrient-Gene Interactions: Epigenetics Nutrient-Gene Interactions: Obesity and Inflammation Nutrient-Gene Interactions: Biomarkers Diet and Cancer: Molecular Targets Diet and Cancer: Animal Studies Exp Animal Nutr: Animal Models of Fetal Nutrition, Programming and Neonatal Development Exp Animal Nutr: Animal Models of Nutrition and Disease Exp Animal Nutr: Animal Models for Nutrition across Physiological States Nutr Immunology: Nutrition and Infection Vit Min: Water and Fat Soluble Vitamins and Chronic Disease Vit Min: Selenium Vit Min: Micronutrient Bioavailability and Antioxidant Function Vit Min: Zinc 	<ul style="list-style-type: none"> Global Nutrition: Diets and foods Global Nutrition: Cognitive Nutrition Across the Lifespan: Nutrition, Neurobiology, and Mood and Behavior (Co-sponsor: Aging, Obesity and Nutrition Translation) Nutrition Across the Lifespan: Early Childhood Nutrition Comm Pub Hlth Nutr: Health Disparities and Promoting Health in Diverse Populations Comm Pub Hlth Nutr: Food Environment Comm Pub Hlth Nutr: Policy and Systems Approaches in Community and Public Health Nutrition Nutr. Epi.: Innovation and Validation of Dietary Assessment Tools and Their Applications Nutr. Epi.: Nutrition and Chronic Disease Epidemiology Edu: Nutrition Education in Medical and Other Professional Schools Edu: Nutrition Education for Practicing Clinicians Edu: Innovations in Undergraduate, Graduate and Medical Nutrition Education Nutr Edu: Evidence-Based Nutrition Education: Development, Testing, and Evaluation Nutr Edu: Nutrition Education and Behavior Change MNC: Interventions for the Treatment and Prevention of Nutrition-Related Diseases MNC: Nutrition and Inflammation MNC: Nutrition and the Microbiome Nutrient-Gene Interactions: Chronic Disease Nutrient-Gene Interactions: Exercise Nutrient-Gene Interactions: Bioactives Diet and Cancer: Clinical and Human Studies Vit Min: B Vitamins and One-Carbon Metabolism Vit Min: Micronutrient Interventions Vit Min: Trace Element Transport and Homeostasis in Health and Disease DBC: Antioxidant and Anti-inflammatory Effects of Dietary Bioactive Components DBC: Cardiovascular Effects of Dietary Bioactive Components DBC: Dietary Bioactive Components of Medicinal, Functional and Whole Foods (including Probiotics and Fermented Foods)

Posters will be displayed 8:30 AM – 5:00 PM Sunday – Tuesday. Authors MUST be present by their boards during their designated time between 12:45 PM – 2:45 PM.

Late Breaking posters will be displayed Wednesday, April 1, 2015 starting at 8:30 AM. Authors MUST be present by their boards 10:00 AM – 11:00 AM.

Late Breaking Posters will include: Variability in Responses to Diet and Food, Nutrition on Healthy Growth, Development and Reproduction, Disease Prevention, Progression and Treatment, Nutrition-Related Behaviors, Food Supply and Environment, Vitamins, Minerals, and Bioactives, Energy and Nutrient Metabolism, and Community, Public Health and Global Nutrition

OFFICIAL SCIENTIFIC PROGRAM

Saturday, March 28, 2015

8:00 AM–12:30 PM

CREATING THE FUTURE OF EVIDENCE-BASED NUTRITION RECOMMENDATIONS USING LIPID RESEARCH CASE STUDIES

SUPPORTED BY THE INTERNATIONAL LIFE SCIENCES INSTITUTE, NORTH AMERICA

Boston Convention & Exhibition Center – Grand Ballroom East

CHAIRS

Kristin H. Rubin, PhD and Johanna T. Dwyer, DSc, RD

PRESENTATIONS

Introduction. Johanna T. Dwyer, DSc, RD, Boston, MA and Kristin H. Rubin, PhD, Glenview, IL

Conducting research to inform future evidence-based dietary guidance. Tricia Psota, PhD, RDN, Alexandria, VA

Inflammatory biomarkers in lipid studies. Kevin L. Fritsche, PhD, Columbia, MO

Research on partially hydrogenated oils and LDL-cholesterol for regulatory decisions. DeAnn Liska, PhD, Addison, IL

Break 10:20 AM – 10:40 AM

Research informing dietary guidance on omega-3 fatty acids. William S. Harris, PhD, Sioux Falls, SD

Evidence approach to nutrition guidance in the U.S. Military: Using omega-3 as a case study. Scott J. Montain, PhD, Natick, MA

Panel Discussion

Recommendations to improve lipid nutrition research impact on evidence-based guidelines and policy decision-making.

Moderated by Johanna T. Dwyer

Susan Mayne, PhD, FACE

Kevin L. Fritsche, PhD

William S. Harris, PhD

DeAnn Liska, PhD

Scott J. Montain, PhD

Tricia Psota, PhD, RDN

Light refreshments will be served from 8:00 am – 8:30 am.

10:30 AM–12:30 PM

MATERNAL/FETAL NUTRITION AND PROGRAMMING: WHAT HAVE WE LEARNED FROM FARM ANIMAL MODELS?

SUPPORTED BY MEAD JOHNSON PEDIATRIC NUTRITION INSTITUTE

Boston Convention & Exhibition Center – Room 157 ABC

CHAIRS

Gretchen Myers Hill, PhD and Teresa A. Davis, PhD

PRESENTATIONS

Select nutrients and their effects on conceptus development in mammals. Fuller W. Bazer, PhD, College Station, TX

Altering specific functions of the ruminant placenta: New approaches to assess causation of fetal growth restrictions.

Russell V. Anthony, PhD, Fort Collins, CO

Role of nutrition in vascular dysfunction and prematurity.

Lawrence P. Reynolds, PhD, Fargo, ND

The role of the small intestine in developmental programming:

Impact of maternal nutrition on the dam and offspring. Allison M.

Meyer, PhD, Columbia, MO

3:00 PM–5:00 PM

NUTRITIONAL APPROACHES FOR OSTEOSARCOPENIC OBESITY: INTERRELATIONSHIPS BETWEEN BONE, MUSCLE AND FAT AGING AND CHRONIC DISEASE RIS

SUPPORTED BY PEPSICO

Boston Convention & Exhibition Center – Room 157 ABC

CHAIRS

Bahram H. Arjmandi, PhD, RD and Carmen Castaneda-Sceppa, MD, PhD

PRESENTATIONS

Osteosarcopenic obesity: What is it and how can it be managed and prevented? Jasminka Ilich-Ernst, PhD, RD, FACN, Tallahassee, FL

Muscle, bone, and fat: Connections and implications. Clifford J. Rosen, MD, Scarborough, ME

Emerging therapies for musculoskeletal health. Ronenn Roubenoff, MD, MHS, FACP, FACR, Basel, Switzerland

Dietary protein intake during weight loss: Does it impact bone, muscle and fat comparably. Wayne W. Campbell, PhD, West Lafayette, IN

Sunday, March 29, 2015

8:00 AM–10:00 AM

THE eNUTRITION ACADEMY: SUPPORTING A NEW GENERATION OF NUTRITIONAL SCIENTISTS AROUND THE WORLD

NUTRITION EDUCATION COMMITTEE

SUPPORTED BY THE NUTRITION SOCIETY, UK

Boston Convention & Exhibition Center – Room 151 AB

CHAIRS

Sharon M. Donovan, PhD, RD, and Catherine A. Geissler, PhD

PRESENTATIONS

Overview of public health nutrition in Africa. Paul Amuna, PhD, Doha, Qatar

Capacity development in Africa. Francis B. Zotor, PhD, Ho, Volta Region, Ghana

The development of inter-institutional eLearning graduate degrees. Kendra Kattelman, PhD, RDN, LN, FAND, Brookings, SD

The eNutrition Academy – aims and objectives. Catherine A. Geissler, PhD, London, UK

Questions and Open Forum.

OFFICIAL SCIENTIFIC PROGRAM

8:00 AM–10:00 AM

DETERMINANTS OF DISEASE RISK IN THE POSTPRANDIAL PERIOD ENERGY & MACRONUTRIENT METABOLISM RIS

SUPPORTED BY EGG NUTRITION CENTER

Boston Convention & Exhibition Center – Room 157 ABC

CHAIRS

Barbara O. Schneeman, PhD and Tia M. Rains, PhD

PRESENTATIONS

Advances in the understanding of enterocyte lipid handling.

Elizabeth J. Parks, PhD, Columbia, MO

Gut peptide regulation of intestinal lipoprotein particle production. Gary F. Lewis, MD, Toronto, ON Canada

Postprandial hyperglycemia-mediated vascular endothelial dysfunction. Richard S. Bruno, PhD, RD, Columbus, OH

Sleep, free fatty acids and diabetes risk. Esra Tasali, MD, Chicago, IL

8:00 AM–10:00 AM

TRANSLATIONAL AND TRANSFORMATIONAL CONCEPTS IN AMINO ACID SENSING ENERGY & MACRONUTRIENT METABOLISM RIS NUTRIENT–GENE INTERACTIONS RIS

SUPPORTED BY AJINOMOTO

Boston Convention & Exhibition Center – Grand Ballroom East

CHAIRS

Susan Hutson, PhD and Tracy G. Anthony, PhD

PRESENTATIONS

Distributed nutrient sensing in the integrated control of energy balance. Gary J. Schwartz, PhD, Bronx, NY

Amino acid transporters in amino acid sensing and nutritional regulation. Yoshikatsu Kanai, MD, PhD, Osaka, Japan

Amino acid control of cell signaling. Tracy G. Anthony, PhD, New Brunswick, NJ

Methionine mistranslation in stress response and adaptation. Tao Pan, PhD, Chicago, IL

10:30 AM–12:30 PM

PRESIDENTIAL SYMPOSIUM: NUTRITION AND DEVELOPMENTAL ORIGINS OF HEALTH AND DISEASE SUPPORTED BY MEAD JOHNSON PEDIATRIC NUTRITION INSTITUTE

Boston Convention & Exhibition Center – Grand Ballroom East

CHAIR

ASN President: Simin Nikbin Meydani, DVM, PhD

PRESENTATIONS

Nutritional influences on human developmental epigenetics.

Robert A. Waterland, PhD, Houston, TX

Early life gut microflora and immune system development.

Dingding An, PhD, Boston, MA

Fructose, pregnancy and later life impact. Deborah Sloboda, PhD, Hamilton, ON, Canada

Paternal nutrition and transgenerational health outcomes. Lars O. Bygren, MD, PhD, Umea, Sweden

12:45 – 2:45 PM

NATIONAL OSTEOPOROSIS FOUNDATION / AMERICAN SOCIETY FOR NUTRITION DRAFT STATEMENT ON PEAK BONE MASS DEVELOPMENT AND LIFESTYLE FACTORS

CHAIR

Taylor C. Wallace, PhD

PRESENTATIONS

Introduction. Babette S. Zemel, PhD, Philadelphia, PA

Exercise and Physical Activity. Richard Lewis, PhD, RD, Athens, GA

Calcium and Vitamin D. Heidi J. Kalkwarf, PhD, Cincinnati, OH

Research Gaps and Implementation Strategy. Connie M. Weaver, PhD, West Lafayette, IN

3:00 PM–5:00 PM

INTERNATIONAL FORUM – KOREA ORGANIZED AND SPONSORED BY THE KOREAN NUTRITION SOCIETY

Boston Convention & Exhibition Center – Room 151 AB

CHAIRS

Kyung-Jin Yeum, PhD and Nam-Seok Joo, MD, PhD

PRESENTATIONS

Vitamin D – Skeletal and non-skeletal actions. Nam-Seok Joo, MD, PhD, Suwon, South Korea

Update on vitamin D and the role in skeletal muscle. Lisa Ceglia, MD, Boston, MA

Nutrition policy in Korea: Focusing on micronutrients. Youn-Ok Cho, PhD, Seoul, South Korea

Impact of vitamin D and calcium insufficiencies on bone health in Korea. Kyung-Jin Yeum, PhD, South Korea

The new Korean dietary reference intakes (KDRIs) for vitamin D. Jung-Hyun Kim, PhD, South Korea

OFFICIAL SCIENTIFIC PROGRAM

3:00 PM–5:00 PM

DO WE NEED PRECONCEPTION NUTRITION INTERVENTIONS TO IMPROVE BIRTH OUTCOMES BEYOND THE PREVENTION OF NEURAL TUBE DEFECTS? CURRENT KNOWLEDGE AND FUTURE DIRECTIONS GLOBAL NUTRITION COUNCIL

SUPPORTED BY MICRONUTRIENT INITIATIVE

Boston Convention & Exhibition Center – Room 157 ABC

CHAIRS

Usha Ramakrishnan, PhD and Janet C. King, PhD

PRESENTATIONS

Why should preconception nutrition interventions improve birth outcomes? Insights from recent advances in reproductive biology. Janet C. King, PhD, Oakland, CA

Do weekly preconceptional micronutrient supplements improve birth outcomes? Phuong Hong Nguyen, PhD, Thai Nguyen City, Vietnam

Role of food based approaches to improve preconception nutrition and birth outcomes. Caroline Fall, MBChB, DM, FRCP, FRCPCH, Southampton, United Kingdom

Current guidelines for preconception interventions: Future needs and gaps for research and policy. Luz María De-Regil, DSc, MSc, EMINP, Ottawa, ON, Canada

3:00 PM–5:00 PM

HUMAN VARIABILITY & PHYSIOLOGICAL EXTREMES: BLESSING OR CURSE? NUTRITIONAL SCIENCES COUNCIL

SUPPORTED BY PEPSICO

Boston Convention & Exhibition Center – Grand Ballroom East

CHAIRS

Sean H. Adams, PhD and David B. Allison, PhD

PRESENTATIONS

System approaches for analyzing nutrient effects on human physiology. James Kaput, PhD, Switzerland

Blood lipidomics: Sub-groups and responses to nutrient interventions. John W. Newman, PhD, Davis, CA

Precision medicine: Lessons from membrane transporters in metabolic disease. Kathy Giacomini, PhD, San Francisco, CA

Clinical trial designs and challenges in the omics era. Sumithra J. Mandrekar, PhD, Rochester, MN

Monday, March 30, 2015

8:00 AM–10:00 AM

BEING “SOCIAL” HOW SCIENTISTS CAN FIND THEIR WAY IN A 24-HOUR DIGITAL WORLD PUBLIC INFORMATION COMMITTEE AND YOUNG PROFESSIONAL INTEREST GROUP

Boston Convention & Exhibition Center – Room 151 AB
CHAIRS

Mary Ann Johnson, PhD and Victoria Vieira-Potter, PhD

PRESENTATIONS

Using digital strategies for health communication. Lisa Gualtieri, PhD, ScM, Boston, MA

Can industry scientists be social? Michael I. McBurney, PhD, FACN, Parsippany, NJ

Why and when would scientists want to be social? Gregory D. Miller, PhD, Rosemont, IL

Is there a role for social media in careers for new faculty/young professionals? Marion Nestle, PhD, New York, NY

8:00 AM–10:00 AM

DIETARY FIBER, GUT MICROBIOTA AND KIDNEY FUNCTION SUPPORTED BY INGREDION, INC.

Boston Convention & Exhibition Center – Grand Ballroom East

CHAIR

Christian J. Ketchum, PhD and Christine L. Pelkman, PhD

PRESENTATIONS

Associations and mechanisms: Dietary fiber and renal health. Roy J. Martin, PhD, Davis, CA

Role of gut microbiota in chronic kidney disease. Nosratola D. Vaziri, MD, Orange, CA

Kidney function and Vitamin D homeostasis in an animal model of diabetes: Response to resistant starch. Matthew Rowling, PhD, Ames, IA

Nutritional approaches to control toxic uremic solutes and risk of end-stage renal disease. Timothy W. Meyer, MD, Palo Alto, CA

8:00 AM–10:00 AM

INTEGRATED NUTRITION AND EARLY CHILD DEVELOPMENT INTERVENTIONS: PREVENTING HEALTH AND ECONOMIC DISPARITIES GLOBAL NUTRITION COUNCIL

SUPPORTED BY MATHILE INSTITUTE FOR THE ADVANCEMENT OF HUMAN NUTRITION AND MEAD JOHNSON PEDIATRIC NUTRITION INSTITUTE

Boston Convention & Exhibition Center – Room 157 ABC
CHAIRS

Kristen M. Hurley, PhD, MPH and Silvia Fernandez-Rao, PhD

PRESENTATIONS

Integrating nutrition and early child development interventions: The scientific basis and theoretical framework. Maureen M. Black, PhD, Baltimore, MD

Critical versus sensitive periods for integrated nutrition and child development interventions: Lessons learned. Rafael Perez-Escamilla, PhD, New Haven, CT

Findings and lessons learned from integrated nutrition and early child development interventions. Aisha K. Yousafzai, PhD, Pakistan, India

Financial, programmatic, and policy Issues: Scaling up integrated nutrition and early child development interventions. Florencia

OFFICIAL SCIENTIFIC PROGRAM

Lopez Boo, PhD, Washington, DC

10:30 AM–5:00 PM

INTERNATIONAL FORUM – BRAZIL ORGANIZED AND SPONSORED BY THE INTERNATIONAL COLLEGES FOR THE ADVANCEMENT OF NUTROLOGY (ICAN)

Boston Convention & Exhibition Center – Room 151 AB

CHAIR

Socorro Giorelli, MD

PRESENTATIONS

ICAN's President: Welcome and opening of symposium. Paulo C. Giorelli, MD, Associação Brasileira de Nutrologia, Rio de Janeiro, Brazil

Epigenetics and obesity. Rita P. Raman, MD, Univ. of Oklahoma Hlth. Sci. Ctr., Oklahoma City, OK

Brazilian superfoods. Marcella Garcez Duarte, MD, Curitiba – Paraná, Brazil

What is new in post-surgical support for bariatric surgery. Any Ferreira, MD, Sociedad Paraguaya de Nutrición, Asuncion, Paraguay

Obesity and insulin resistance in children and adolescents. Carlos A. Nogueira-de-Almeida, MD, Universidade de Ribeirão Preto, Ribeirão Preto, SP, Brazil

Panel discussion

Break 12:10 – 1:10 PM

Diabetes and obesity. Mabel Carrera, MD, Ciudad de Buenos Aires, Argentina

Pharmacotherapy of obesity. Paulo C. Giorelli, MD, Associação Brasileira de Nutrologia, Rio de Janeiro, Brazil

Body composition in clinical practice: An out clinic experience in Brazil. Silvia Sartoretto, MD, Rio de Janeiro, Brazil

Whey protein in medical practice. Guilherme Giorelli, MD, Associação Brasileira de Nutrologia, Rio de Janeiro, Brazil

Panel discussion

Body composition in obesity: Changes with physical activity and diet. Cesar A. Casavola, MD, Hospital Aleman Buenos Aires, Buenos Aires, Argentina

Dyslipidemia and obesity. Vivian Suen, MD, PhD, University of São Paulo, São Paulo, Brazil

Updates in the management of lactose intolerance. Elza D. Mello, MD, Porto Alegre/RS, Brazil

Nutrological aspects of Endometriosis and oxidative stress. Vivian Ferreira do Amaral, MD, Universidade Federal do Paraná, Curitiba Parana, Brazil

Calorie restriction: Results from CALERIE a 2 year randomized controlled trial. Sai Kupra Das, PhD, Tufts University, Boston, MA

Panel Discussion

10:30 AM–12:30 PM

LOW-CALORIE SWEETENERS AND HEALTH: WHAT DOES THE SCIENCE TELL US? SUPPORTED BY INTERNATIONAL LIFE SCIENCES INSTITUTE, NORTH AMERICA

Boston Convention & Exhibition Center – Grand Ballroom East

CHAIRS

Danielle Greenberg, PhD, FACN and John Fernstrom, PhD

PRESENTATIONS

Mapping out the evidence on low-calorie sweeteners. Mei Chun Chung, PhD, Boston, MA

What the science says regarding low-calorie sweeteners and body weight. Jesse Zuehlke, PhD, Washington, DC

Relationships between low-calorie sweeteners & the microbiome. Victoria Ruiz, PhD, New York, NY

Scientific agreement: The steps needed to get there. John D. Fernstrom, PhD, Pittsburgh, PA

10:30 AM–12:30 PM

RESEARCH REPORTING IN THE 21ST CENTURY: HOW IT IS DIFFERENT AND WHY YOU SHOULD CARE NUTRITION EDUCATION COMMITTEE

Boston Convention & Exhibition Center – Room 157 ABC

CHAIRS

Naomi K. Fukagawa, MD, PhD, Bernhard Hennig, PhD, RD and Dennis M. Bier, MD

PRESENTATIONS

Objectives of the session. Naomi K. Fukagawa, MD, PhD, Burlington, VT

Reporting ethics in evolution: A 200-year perspective from the *New England Journal of Medicine*. Jeffrey M. Drazen, MD, Boston, MA

The good, the bad, and the ugly: What retractions say about scientific transparency. Ivan Oransky, MD, New York, NY

Legal implications of misconduct in research reporting. Debra Parrish, Pittsburgh, PA

Panel discussion with speakers and editors of peer-reviewed journals

Dennis M. Bier, MD, *The American Journal of Clinical Nutrition*

Teresa A. Davis, PhD, *The Journal of Nutrition*

Katherine Tucker, PhD, *Advances in Nutrition*

Naomi K. Fukagawa, MD, PhD, *Nutrition Reviews*

Bernhard Hennig, PhD, RD, *Journal of Nutritional Biochemistry*

OFFICIAL SCIENTIFIC PROGRAM

1:45 PM–2:45 PM

G. A. LEVEILLE AWARD LECTURE: “MY HISTORY IN THE INVOLVEMENT OF FOOD SCIENCE AND NUTRITION”

AMERICAN SOCIETY FOR NUTRITION (ASN) AND THE INSTITUTE OF FOOD TECHNOLOGISTS (IFT)

Boston Convention & Exhibition Center – Grand Ballroom East

Theodore P. Labuza, PhD
Professor
University of Minnesota

This award recognizes outstanding research in nutrition science and food technology. This award was created in 2009 and is co-administered by the ASN and the Institute of Food Technologists (IFT). More information at <http://www.nutrition.org/about-asn/awards/>

3:00 PM–5:00 PM

APPROACHES TO ACCOUNT FOR THE EFFECTS OF INFLAMMATION ON NUTRIENT BIOMARKERS: NUTRITION DETERMINANTS OF ANEMIA (BRINDA) PROJECT

THE GLOBAL NUTRITION COUNCIL AND THE NUTRITIONAL EPIDEMIOLOGY RIS

Boston Convention & Exhibition Center – Room 157 ABC

CHAIRS

Rafael Flores-Ayala, DrPH, MSc and Daniel J. Raiten, PhD

PRESENTATIONS

Overview of BRINDA project. Parmi S. Suchdev, MD, MPH, Atlanta, GA

Approaches to address the influence of inflammation on iron biomarkers. Sorrel Namaste, DrPH, MHS, Washington, DC

Risk factors for anemia in different settings: Implications for programs. Grant J. Aaron, Geneva, Switzerland

Research, policy and programmatic implications of BRINDA findings. Kenneth H. Brown, MD, Davis, CA

3:00 PM–5:00 PM

GUT MICROBES AND THE BRAIN: WHAT IS THE EFFECT ON HUMAN BEHAVIOR?

SUPPORTED BY DANONE NUTRICIA RESEARCH AND YAKULT HONSHA, LTD.

Boston Convention & Exhibition Center – Grand Ballroom East

CHAIRS

Emeran Mayer, MD and W. Allan Walker, MD

PRESENTATIONS

Gut microbiome and neurochemical-based interactions between host, microbiota and diet. Mark Lyte, PhD, Abilene, TX

Gut microbiome and autism spectrum disorder. Sarkis K. Mazmanian, PhD, Pasadena, CA

Gut microbiome influences on brain and behavior in rodents. Premysl Bercik, MD, Hamilton, ON Canada

Gut microbiome influences on human brain, behavior and disease – facts and fancy. Emeran Mayer, MD, Los Angeles, CA

Tuesday, March 31, 2015

8:00 AM–10:00 AM

IS “WHEN” WE EAT AS IMPORTANT AS “WHAT” WE EAT? – CHRONOBIOLOGICAL ASPECTS OF FOOD INTAKE

ENERGY & MACRONUTRIENT METABOLISM RIS AND NUTRITION TRANSLATION RIS

SUPPORTED BY THE KELLOGG COMPANY

Boston Convention & Exhibition Center – Room 157 ABC

CHAIRS

Lisa Sanders, PhD, RD and Carol O’Neil, PhD

PRESENTATIONS

The human circadian timing system and its influence on metabolic processes. Frank Scheer, PhD, Boston, MA

Eat breakfast like a king? Meal timing, frequency and composition as a regulator of body clocks. Jonathan Johnston, PhD, Surrey, United Kingdom

Impact of circadian dysregulation on food intake, gastrointestinal function and metabolism – what we’ve learned from animal models. Fred Turek, PhD, Evanston, IL

Circadian disruptions in humans impact on metabolism, energy balance & obesity. José M. Ordovás, PhD, Boston, MA

8:00 AM–10:00 AM

DIET AND IMMUNOMETABOLISM NUTRITIONAL IMMUNOLOGY RIS AND OBESITY RIS

Boston Convention & Exhibition Center – Grand Ballroom East

CHAIRS

S. Raza Shaikh, PhD and Laura Coleman, PhD, RD

PRESENTATIONS

How might ‘metabolic health’ reduce diabetes and cancer risks in obesity? Gerald V. Denis, PhD, Boston, MA

Role for resident macrophages in adipose tissue iron homeostasis. Alyssa Hasty, PhD, Nashville, TN

Metabolite mediated regulation of inflammasome activation. Wajahat Z. Mehal, PhD, MD, New Haven, CT

Lymphocyte function in human type 2 diabetes. Barbara S. Nikolajczyk, PhD, Boston, MA

Adipose tissue inflammation and insulin sensitivity. Andrew Greenberg, MD, Boston, MA

OFFICIAL SCIENTIFIC PROGRAM

8:00 AM–10:00 AM

INTERNATIONAL FORUM – CHINA: CHALLENGES AND OPPORTUNITIES IN HEALTH AND NUTRITION
ORGANIZED AND SPONSORED BY THE CHINA INTEREST GROUP (CIG), AMERICAN SOCIETY FOR NUTRITION (ASN), CHINESE NUTRITION SOCIETY (CNS), AND NORTH AMERICAN CHINESE SOCIETY FOR NUTRITION (NACSN)

Boston Convention & Exhibition Center – Room 151 AB

CHAIRS

Chaodong Wu, PhD and Jay J. Cao, PhD

PRESENTATIONS

Welcome and goals of the session. Xingen Lei, PhD, Chair of CIG, ASN; Past President of NACSN, Ithaca, NY

New era's health challenges and nutrition opportunities in China. Wenhua Ling, PhD, Guangzhou, China

Current nutraceutical status in China. Duo Li, PhD, Hangzhou, China

New health challenges in China: Findings from the China Health and Nutrition Survey in 1989 –2011. Shufa Du, PhD, Chapel Hill, NC

Identification of small molecules in botanicals to prevent diabetes. Dongmin Liu, PhD, Blacksburg, VA

Regulation of energy metabolism by short chain fatty acids. Jianping Ye, MD, Pennington Biomedical Research Center, Baton Rouge, LA

Introduction to CNS's 12th Scientific Meeting. Guiju Sun, PhD, Nanjing, China

NACSN Presidential remarks. Chwan-Li (Leslie) Shen, PhD, CCRP, President of NACSN, Lubbock, TX

NACSN: Plan of 2015-2016. Youfa Wang, MD, PhD, MS, Incoming President of NACSN, Buffalo, NY

NACSN Travel Awards. Chwan-Li (Leslie) Shen, PhD, CCRP and Chaodong Wu, MD, PhD

Q&A Session

10:30 AM–12:30 PM

ESTABLISHING YOURSELF AS AN EXPERT
ORGANIZED BY THE YOUNG PROFESSIONAL INTEREST GROUP
SUPPORTED BY DUPONT NUTRITION AND HEALTH

Boston Convention & Exhibition Center – Room 151 AB

CHAIRS

Eric D. Ciappio, PhD, RD and Mary N. Henderson, PhD, RD

PRESENTATIONS

Publishing do's and don'ts – best practices to advance your career. Katherine Tucker, PhD, Lowell, MA

Using social media to establish your brand as a nutrition expert. Gregory D. Miller, PhD, Rosemont, IL

Navigating group dynamics to come to consensus scientific opinions. Janet C. King, PhD, Oakland, CA

Managing working relationships with colleagues. Steven H. Zeisel, MD, PhD, Kannapolis, NC

10:30 AM–12:30 PM

FOOD AND NUTRITION BOARD UPDATE:
NEW DIRECTIONS IN FOOD, NUTRITION, AND
POPULATION HEALTH

Boston Convention & Exhibition Center – Room 157 ABC

CHAIRS

Ann L. Yaktine, PhD, RD and Suzanne P. Murphy, PhD, RD

PRESENTATIONS

FNB update: Exploring new frontiers in food and nutrition. Suzanne P. Murphy, PhD, RD, Honolulu, HI

A framework for assessing the health, environmental, social and economic effects of the food systems. Malden C. Nesheim, PhD, Ithaca, NY

Examining a developmental approach to childhood obesity: The fetal and early childhood years. Shari Barkin, MD, MSHS, Nashville, TN

White potatoes and WIC – controversies and consequences. Kathleen M. Rasmussen, ScD, Ithaca, NY

10:30 AM–12:30 PM

AN INTERDISCIPLINARY EXAMINATION OF
POTENTIAL EFFECTS OF MATERNAL OBESITY ON
LACTATION PHYSIOLOGY AND THE HUMAN MILK
MICROBIOME
LACTATION RIS

SUPPORTED BY MEAD JOHNSON PEDIATRIC NUTRITION
INSTITUTE

Boston Convention & Exhibition Center – Grand Ballroom East

CHAIRS

Cheryl Lovelady, PhD, RD and Laurie Nommsen-Rivers, PhD, RD

PRESENTATIONS

Lactation insufficiency and maternal obesity: Introduction to the symposium. Cheryl Lovelady, PhD, RD, Greensboro, NC

Does impaired insulin action underlie the observed association between obesity and shortened breastfeeding duration? Laurie A. Nommsen-Rivers, PhD, RD, Cincinnati, OH

Diet-induced obesity compromises lactation by redistributing Zn pools and promoting premature involution. Shannon L. Kelleher, PhD, Hershey, PA

The human milk microbiome may be influenced by maternal obesity. María Carmen Collado, PhD, Valencia, Spain

Differences in bioactive components in milk between lean and overweight women and their relationship to infant body composition. Bridget V. Young, PhD, Aurora, CO

12:45 PM–2:45 PM

W.O. ATWATER AWARD LECTURE
“FOOD IS NOT A TALISMAN: REFLECTIONS ON THE
SCIENCE AND PRACTICE OF NUTRITION”
SUPPORTED BY USDA ARS BELTSVILLE

Boston Convention & Exhibition Center – Grand Ballroom East

OFFICIAL SCIENTIFIC PROGRAM

Joanne L. Slavin, PhD
Professor
University of Minnesota

The W.O. Atwater Lectureship was established in 1968 to honor the memory of Wilbur Olin Atwater (1844-1907) and to recognize scientists who have made unique contributions toward improving the diet and nutrition of people around the world. Atwater, considered the father of modern nutrition research and education, was the U.S. Department of Agriculture's first chief of nutrition investigations.

12:45 PM-2:00 PM

INTERNATIONAL FORUM – TAIWAN ORGANIZED AND SPONSORED BY THE NUTRITION SOCIETY OF TAIWAN

Boston Convention & Exhibition Center – Room 151 AB
CHAIRS

Hui-Chen Lo, PhD and Feng-Yao Tang, PhD

PRESENTATIONS

Activities of the Nutrition Society of Taiwan in the past 40 years.
Guoo-Shyng W. Hsu, PhD, New Taipei City, Taiwan

Nutrition policy of government in Taiwan. TBD

Nutrition and Health Survey in Taiwan (NAHSIT) for nutrition and health monitoring, evidence-based guideline, and public policy.
Wen-Harn Pan, PhD, Taipei, Taiwan

Nutritional economics – Taiwanese experiences. Meei-Shyuan Lee, Taipei, Taiwan

The current status of nutrition research in Taiwan. Enpei I. Chiang, DSc, Taichung, Taiwan

3:00 PM-5:00 PM

PEDIATRIC NEUROCOGNITIVE DEVELOPMENT: EMERGING INSIGHTS AND APPLICATIONS IN NUTRITION

ORGANIZED BY THE NUTRITION TRANSLATION RIS AND
ENDORSED BY GLOBAL NUTRITION COUNCIL, NUTRITIONAL
SCIENCES COUNCIL AND LACTATION RIS

SUPPORTED BY THE UNIVERSITY OF ILLINOIS AT URBANA-
CHAMPAIGN'S CENTER FOR NUTRITION, LEARNING AND
MEMORY WHICH IS SPONSORED BY ABBOTT NUTRITION

**Boston Convention & Exhibition Center – Grand
Ballroom East**

CHAIRS

Miguel Alonso-Alonso, MD and Emily C. Radlowski, PhD, RD

PRESENTATIONS

Diet and cognition: Overview of influences and current directions.
Neal J. Cohen, PhD, Urbana, IL and Naiman A. Khan, PhD, RD,
Urbana, IL

The developing brain: Insights from neuroimaging studies. Susan
Carnell, PhD, Baltimore, MD

Can early nutrition influence long-term neurocognition? The case
of breast milk. Sean C.L. Deoni, PhD, Aurora, CO

Novel neurotechnologies to evaluate neurocognitive function and
nutrition: The global fNIRS initiative. Clare E. Elwell, PhD, London,
United Kingdom

3:00 PM-5:00 PM

HISTORY OF NUTRITION: THE LONG ROAD LEADING TO THE DIETARY REFERENCE INTAKES HISTORY OF NUTRITION COMMITTEE

Boston Convention & Exhibition Center – Room 151 AB
CHAIRS

Forrest H. Nielsen, PhD and Ann L. Yaktine, PhD, RD

PRESENTATIONS

The advent of the DRI paradigm: Why it improved on the RDAs.
Allison A. Yates, PhD, RD, Johnson City, TN

Conventions and controversies in setting the DRIs. Stephanie A.
Atkinson, PhD, Hamilton, Canada

The expanded uses of the DRIs. Susan I. Barr, PhD, Vancouver,
Canada

How the DRIs have changed nutrition policies. Johanna T. Dwyer,
DSc, RD, Bethesda, MD

Current and projected development of the DRIs. Suzanne P.
Murphy, PhD, RD, Honolulu, HI

3:00 PM-5:00 PM

IMPROVING CARDIO-SKELETAL HEALTH BY EXPLORING THE HEART – BONE CONNECTION SUPPORTED BY NATIONAL DAIRY COUNCIL

**Boston Convention & Exhibition Center – Room 157
ABC**

CHAIRS

Connie M. Weaver, PhD

PRESENTATIONS

The impact of dietary calcium and vitamin D on the heart and
bone. Connie M. Weaver, PhD, West Lafayette, IN

Racial differences and the impact of nutrition in osteoporosis, CVD
and chronic kidney disease. Regan Bailey, PhD, RD, Bethesda, MD

The role of dietary phosphorus in kidney, cardiovascular, and bone
health. Kathleen Hill Gallant, PhD, RD, West Lafayette, IN

Interrelationships of disorders of the kidney, heart and bone.
Dwight A. Towler, MD, PhD, Orlando, FL

Wednesday, April 1, 2015

8:00 AM-10:00 AM

RESISTANT STARCH, MICROBIOTA AND GUT HEALTH NUTRITIONAL SCIENCES COUNCIL SUPPORTED BY PEPSICO

**Boston Convention & Exhibition Center – Grand
Ballroom East**

CHAIR

Diane F. Birt, PhD

PRESENTATIONS

Resistant starch, potential for reduction of risk for colon cancer.
Diane F. Birt, PhD, Ames, IA

How does dietary resistant starch impact the gastrointestinal

OFFICIAL SCIENTIFIC PROGRAM

microbiota? Jens Walter, PhD, Edmonton, Canada

Resistant starch and inflammation: A role in the treatment of inflammatory bowel disease. Janine A. Higgins, PhD, Aurora, CO

Resistant starch mechanisms: Short chain fatty acids, gut hormones, or other suspects; does it add up? Joanne L. Slavin, PhD, St. Paul, MN

8:00 AM-10:00 AM

WHAT'S NEW IN NATURAL PRODUCTS ANALYSIS? CUTTING-EDGE METHODS AND AVAILABLE RESOURCES FOR NUTRITION RESEARCH **NUTRITIONAL SCIENCES COUNCIL AND DIETARY BIOACTIVE COMPONENTS RIS**

Boston Convention & Exhibition Center - Room 157 ABC

CHAIRS

Barbara C. Sorkin, PhD and James M. Harnly, PhD

PRESENTATIONS

Importance of accurate measurement in nutrition research: flavonoids as a case study. James M. Harnly, PhD, Beltsville, MD

How to approach a more holistic analysis of complex natural products. Charlotte Simmler, Chicago, IL

The challenge of reproducibility in natural products research: Perspectives and examples from the NCCAM product integrity policy. D. Craig Hopp, PhD, NCCAM, Bethesda, MD

Importance of making sure the methods are a match for the materials, and the NIH analytical methods and reference materials program. Paula N. Brown, PhD, Burnaby, Canada

10:30 AM-12:30 PM

"ONE NUTRITION": CLINICAL NUTRITION ACROSS SPECIES



The not obesity epidemic Deborah F. Linder DVM, DACVN, North



SPONSORED SATELLITE PROGRAMS

Sponsored Satellite Programs provide an opportunity for external groups – industry, trade organizations, government, other scientific societies, etc. – to share and discuss research findings with the nutrition science community in conjunction with American Society for Nutrition scientific meetings. **Sponsored Satellite Programs** are not considered part of the official ASN program, and ASN does not endorse the content presented or their proceedings, publications, etc. Proposals for **Sponsored Satellite Programs** are peer-reviewed by ASN's Scientific Program Committee. Continuing professional education credits are provided for dietitians. Attendance is limited and pre-registration is strongly encouraged. Register at <http://scientificsessions.nutrition.org/satellites/>

Friday, March 27, 2015

ASN SPONSORED SATELLITE PROGRAM: WHOLE-MILK DAIRY FOODS IN NUTRITION AND HEALTH: AN EVALUATION OF THE CURRENT STATE OF THE SCIENCE **ORGANIZED AND SPONSORED BY THE NATIONAL DAIRY COUNCIL**

8:30 AM – 12:00 PM

Renaissance Boston Waterfront Hotel – Pacific Grand Ballroom E

Introduction. Mario Kratz, PhD, Fred Hutchinson Cancer Research Center, Seattle, WA

Current dietary fat recommendations and the bioactive fatty acids of milkfat. J. Thomas Brenna, PhD, Cornell University, Ithaca, NY

Clinical evidence for saturated fat and full-fat dairy foods on lipid biomarkers. Moises Torres-Gonzalez, PhD, National Dairy Council, Rosemont, IL

Dairy foods, dairy fat and cardiometabolic outcomes. Dariush Mozaffarian, MD, DrPH, Tufts University, Boston, MA

Moderated panel discussion. Mario Kratz, PhD, Fred Hutchinson Cancer Research Center, Seattle, WA

ASN SPONSORED SATELLITE PROGRAM: SCIENCE AND POLICY: ADOPTING A FRUITFUL VEGETABLE ENCOUNTER FOR OUR CHILDREN **ORGANIZED AND SPONSORED BY THE ALLIANCE FOR POTATO RESEARCH AND EDUCATION**

1:00 PM – 5:00 PM

Renaissance Boston Waterfront Hotel – Pacific Grand Ballroom FGH

A historical overview of the science of transitional feeding recommendations for infants and young children. Ronald E. Kleinman, MD, Massachusetts General Hospital, Boston, MA

A historical overview of policy for government feeding programs targeting low-income families. Edward M. Cooney, JD, Congressional Hunger Center, Washington, DC

Vegetable consumption of children ages three to five years: Developmental and maternal influences. Susan L. Johnson, PhD,

University of Colorado Denver, Denver, CO

Nutrient intakes among infants and children from one to three years. Maureen L. Storey, PhD, Alliance for Potato Research & Education, McLean, VA

The nutritional tradeoff of nutrients contributed by vegetables, including potatoes in the diet. Theresa A. Nicklas, DrPH, MPH, Baylor College of Medicine, Houston, TX

Effects of carbohydrate sources in meals on satiety and food intake response in lean healthy children. G. Harvey Anderson, PhD, University of Toronto, Toronto, Canada

Status of the science: Where do we go from here? Jennifer Orlet Fisher, PhD, Temple University School of Medicine, Philadelphia, PA

Status of science-based policy for children: Where are the research gaps? Ronald E. Kleinman, MD and Theresa A. Nicklas, DrPH, MPH

ASN SPONSORED SATELLITE PROGRAM: NEURAL – PHYSIOLOGIC MECHANISMS REGULATING SODIUM APPETITE **ORGANIZED AND SPONSORED BY THE GROCERY MANUFACTURERS ASSOCIATION**

1:00 PM – 5:00 PM

Renaissance Boston Waterfront – Pacific Grand Ballroom E

Background: Diet, blood pressure, mortality. Suzanne Oparil, MD, University of Alabama, Birmingham, AL

Interface of sodium homeostasis with neural control of sodium intake. Fred C. Luft, MD, Vanderbilt University and Humboldt University, Berlin

Neural regulation of sodium appetite. Joel C. Geerling, MD, Beth Israel/Deaconess Medical Center, Boston, MA

Primacy of neural control of body fluid homeostasis. Kim Johnson, PhD, University of Iowa

Neural response to fluctuations in body sodium levels – Potential impact on CVD risk. Eric Krause, PhD, University of Florida, Gainesville, FL

Integrating complex biological evidence in setting DRI's and guidelines. Rob M. Russell, MD, Tufts University

Summary. David A. McCarron, MD, University of California, Davis, Davis, CA

SPONSORED SATELLITE PROGRAMS

Saturday, March 28, 2015

ASN SPONSORED SATELLITE PROGRAM: SWEETENERS AND HEALTH: CURRENT UNDERSTANDINGS, RECENT RESEARCH FINDINGS AND DIRECTIONS FOR FUTURE RESEARCH ORGANIZED AND SPONSORED BY THE RIPPE LIFESTYLE INSTITUTE

6:30 AM – 8:00 AM

Boston Convention & Exhibition Center – Room 153 AB

The relationship of sugar consumption to obesity and diabetes: Results of recent systematic reviews and meta analyses. John L. Sievenpiper, MD, PhD, St. Michael's Hospital, Toronto, Canada

Relationship between sugar consumption and cardiovascular risk factors: Results of recent randomized controlled trials. James M. Rippe, MD, Rippe Lifestyle Institute, Shrewsbury, MA

The relationship between non-nutritive sweeteners and chronic disease: Current understandings. John D. Fernstrom, PhD, University of Pittsburgh School of Medicine, Pittsburgh, PA

ASN SPONSORED SATELLITE PROGRAM: BODY WATER REGULATION: VASOPRESSIN AS A NEW PREDICTOR OF DISEASE RISK? ORGANIZED AND SPONSORED BY DANONE NUTRICIA RESEARCH

6:30 AM – 8:00 AM

Boston Convention & Exhibition Center – Room 156 BC

Water and kidney physiology and pathology. Nadine Bouby, PhD, Centre de Recherche des Cordeliers, INSERM, France

Increased water intake in chronic kidney disease: The final frontier. William Clark, MD, FRCPC, FACP, FASN, FCAHS, University of Western Ontario, Canada

Vasopressin, from regulator to disease predictor for diabetes and cardiometabolic risk. Olle Melander, MD, PhD, Lund University, Sweden

Vasopressin and Fluid intake: connecting the dots for future research. Isabelle Guelinckx, PhD, Danone Nutricia Research, France

Questions and Answers.

ASN SPONSORED SATELLITE PROGRAM: CURRENT PERSPECTIVE ON PROTEIN QUALITY AND PRACTICAL IMPLICATIONS FOR POLICY ORGANIZED AND SPONSORED BY DUPONT NUTRITION AND HEALTH

12:45 PM – 2:45 PM

Boston Convention & Exhibition Center – Room 153 AB

Public health implications of dietary protein. Ricardo Uauy, MD, PhD, London School of Hygiene & Tropical Medicine, United Kingdom

Methods for determining protein quality. Anura V. Kurpad, PhD,

St. John's Research Institute, Karnataka, India

Transition from animal models to human needs. Daniel Tomé, AgroParisTech Joint Research Unit for Nutritional Physiology and Feeding Behaviour, Paris, France

Taking protein quality methodology into practice: Perspective of food industry. Phil Kerr, DuPont Nutrition and Health

ASN SPONSORED SATELLITE PROGRAM: 3RD GLOBAL SUMMIT ON THE HEALTH EFFECTS OF YOGURT: YOGURT CONSUMPTION AND WEIGHT MANAGEMENT ORGANIZED AND SPONSORED BY THE DANONE INSTITUTE INTERNATIONAL AND ASN

12:45 PM – 2:45 PM

Boston Convention & Exhibition Center – Room 153 BC

Welcome and introductions. Sharon M. Donovan, PhD, RD, University of Illinois at Urbana-Champaign, IL and Raanan Shamir, MD, Tel Aviv University, Israel

Yogurt consumption and weight in the scientific literature: A protocol driven approach. Jacqui Eales, York Health Economics Consortium, University of York, UK

Yogurt and weight: New insights on the evidence. Richard L. Atkinson, MD, Virginia Commonwealth University, Richmond, VA

Yogurt and weight: Potential mechanisms. Angelo Tremblay, PhD, Laval University, Canada

Wrap up and summary. Sharon M. Donovan and Raanan Shamir

Sunday, March 29, 2015

ASN SPONSORED SATELLITE PROGRAM: OATS: MORE THAN JUST A WHOLE GRAIN ORGANIZED AND SPONSORED BY PEPSICO

6:30 AM – 8:00 AM

Renaissance Boston Waterfront Hotel – Pacific Grand Ballroom E

Presenting overview of recent research summarized in British Journal of Nutrition (Oct. 2014 Supplement). Roger A. Clemens, DrPh, USC School of Pharmacy, Los Angeles, CA

Reviewing the evidence on cardiovascular and gastro-intestinal health. Penny M. Kris-Etherton, PhD, RD, Pennsylvania State University, University Park, PA

Blood glycemic response as a result of oats consumption and the role of β -glucan. Thomas M. Wolever, PhD, University of Toronto, Toronto, Canada

SPONSORED SATELLITE PROGRAMS

ASN SPONSORED SATELLITE PROGRAM: RUNNING ON EMPTY – IS THERE A METABOLIC OR COGNITIVE BENEFIT TO THE MORNING MEAL? ORGANIZED AND SPONSORED BY THE KELLOGG COMPANY

6:30 AM – 8:00 AM

Renaissance Boston Waterfront Hotel – Pacific Grand Ballroom ABCD

Impact of breakfast on weight management and energy metabolism. Heather Leidy, PhD, University of Missouri, Columbia, MO Breakfast and metabolic wellness/homeostasis. Kevin C. Maki, PhD, Midwest Center for Metabolic and Cardiovascular Research, Glen Ellyn, IL

Breaking the fast: The impact of breakfast on cognition and psychological well being. Mary Beth Spitznagel, PhD, Kent State University, Kent, OH

Monday, March 30, 2015

ASN SPONSORED SATELLITE PROGRAM: A HEALTHY APPROACH TO DIETARY FAT CONSUMPTION: UNDERSTANDING THE SCIENCE AND TAKING ACTION TO CLEAR UP CONSUMER CONFUSION ORGANIZED AND SPONSORED BY THE HASS AVOCADO BOARD

6:30 AM – 8:00 AM

Renaissance Boston Waterfront Hotel – Pacific Grand Ballroom D

Population-based associations between dietary fat intakes and health outcomes. Frank Hu, MD, PhD, Harvard University, Boston, MA

The benefits of unsaturated fats for disease reduction and health promotion. Penny M. Kris-Etherton, PhD, RD, Pennsylvania State University, University Park, PA

Consumer confusion and empowering researchers to work with media. Kathleen Zelman, MPH, RD, LD, WebMD, Marietta, GA

ASN SPONSORED SATELLITE PROGRAM: BREAKFAST BIOACTIVES ORGANIZED AND SPONSORED BY PEPSICO

6:30 AM – 8:00 AM

Renaissance Boston Waterfront Hotel – Pacific Grand Ballroom E

Beginning with bioactives. Johanna T. Dwyer, DSc, RD, Tufts University School of Medicine, Boston, MA

Oats, more than just a fiber: The role of unique bioactive avenanthramides. Shengmin Sang, PhD, North Carolina A&T State University, Kannapolis, NC

Fruit juice bioactives: Content and function. Jeffrey B. Blumberg, PhD, FASN, FACN, CNS-S, Tufts University, Boston, MA

ASN SPONSORED SATELLITE PROGRAM: PAIRING NUTS AND DRIED FRUIT FOR CARDIOMETABOLIC HEALTH ORGANIZED AND SPONSORED BY THE SUN-MAID GROWERS OF CALIFORNIA & AMERICAN PISTACHIO GROWERS

6:30 AM – 8:00 AM

Boston Convention & Exhibition Center – Room 52 A

Tree nuts and dried fruits: Their contribution to US nutrient intake and dietary quality. Victor L. Fulgoni, III, Nutrition Impact LLC, Battle Creek, MI

Beneficial effects of pistachio intake, insulin resistance and metabolic risk factors. Monica Bullo, PhD, Rovira i Virgili University, Reus, Spain

Raisin intake by humans: Effects on glycemia, insulinemia and metabolic risk factors. Cyril W.C. Kendall, PhD, University of Toronto, Toronto, Canada

ASN SPONSORED SATELLITE PROGRAM: SMART SNACKING: WHEN SCIENCE MEETS NUTRITION ORGANIZED AND SPONSORED BY PEPSICO

6:30 AM – 8:00 AM

Renaissance Boston Waterfront Hotel – Atlantic Ballroom 123

The state of snacking: Insights into behaviors, trends and opportunities. Sally Lyons Wyatt, IRI, Chicago, IL

Whole grains and human health: From research to food practice. Joanne L. Slavin, PhD, RD, University of Minnesota, St. Paul, MN

Smart snacking: Latest research and a look into the future. Richard D. Mattes, MPH, PhD, RD, Purdue University, West Lafayette, IN

Wednesday, April 1, 2015

ASN SPONSORED SATELLITE PROGRAM: NATIONAL FOOD AND NUTRITION POLICY: BALANCING THE ROLE OF RESEARCH, NUTRITION SCIENCE AND PUBLIC HEALTH ORGANIZED AND SPONSORED BY THE CORN REFINERS ASSOCIATION

6:30 AM – 8:00 AM

Boston Convention & Exhibition Center – Room 151 AB

The role of scientific research in food and nutrition policy. Roger A. Clemens, DrPH, CFS, CNS, FACN, FIFT, FIAFST, USC School of Pharmacy, Los Angeles, CA

The widespread effects of food and nutrition policy on public health. Joanne L. Slavin, PhD, RD, University of Minnesota, St. Paul, MN

The importance of consistent, systematic evaluation processes in policy making. Connie M. Weaver, PhD, Purdue University, West Lafayette, IN

SPONSORED SATELLITE PROGRAMS

ASN SPONSORED SATELLITE PROGRAM:

PHENOTYPIC FLEXIBILITY

ORGANIZED AND SPONSORED BY NUTRITECH, A EUROPEAN COMMISSION-FUNDED PROJECT

9:00 AM – 12:30 PM

Boston Convention & Exhibition Center – Room 151 AB

PRESENTATIONS

Mechanistic insights. Ben van Ommen, PhD, TNO Quality of Life, NL

The beauty of challenge tests. Professor Hannelore Daniel, Technical University of Munich, DE

Influence of genetics in phenotypic flexibility. Jose Ordovas, PhD, IMDEA Food Institute, ES

From phenotypic flexibility to the next generation of health claims: Research with Industry. Suzan Wopereis, PhD, TNO Quality of Life, NL

NutriTech results: Contribution to assessing food intake. Lorraine Brennan, PhD, University College Dublin, IE

NutriTech results: Intervention study – Overview. Gary Frost, PhD, Imperial College London, UK



SUSTAINING PARTNERS

Thank you to all of our industry partners for supporting ASN and its mission through the Sustaining Partner Program. Your efforts are appreciated and will continue to help further nutrition research and education not only in the United States, but globally.

Abbott Nutrition
Alliance for Potato Research & Education
Almond Board of California
Biofortis Clinical Research
Cargill, Inc.
The Coca-Cola Company
Council for Responsible Nutrition
The Dannon Company
DSM Nutritional Products, LLC
DuPont Nutrition and Health
Egg Nutrition Center
General Mills Bell Institute of Health & Nutrition
Herbalife Nutrition Institute
The Hillshire Brands Company
Kellogg Company
Kraft Foods Group
Mars Chocolate North America
McCormick Science Institute
McDonald's
Mondelez International, Inc.
Monsanto Company
National Cattlemen's Beef Association
National Dairy Council
Nestlé Nutrition Institute
PepsiCo
Pfizer, Inc.
Pharmavite, LLC
The Sugar Association
Tate & Lyle
Unilever North America

Join members of the Sustaining Partner Roundtable at the Industry Forum (Friday, 5:30 – 6:30 PM, Renaissance Boston Waterfront, Atlantic Ballroom 1) to hear about the latest programs and initiatives from ASN.

SPECIAL THANKS TO OUR MEETING SPONSORS

Abbott Nutrition

Ajinomoto

Alliance for Potato Research and Education

American Pistachio Growers

Corn Refiners Association

Crème Global

Danone Institute International

Danone Nutricia Research

DSM Nutritional Products

DuPont Nutrition and Health

Egg Nutrition Center

Grocery Manufacturers Association

Hass Avocado Board

International Life Sciences Institute, North America

Ingredion, Inc.

Mathile Institute for the Advancement of Human Nutrition

Mead Johnson Pediatric Nutrition Institute

Micronutrient Initiative

National Dairy Council

Nestlé Nutrition Institute

Rippe Lifestyle Institute

PepsiCo

Sun-Maid Growers of California

The Kellogg Company

The Nutrition Society (UK)

University of Illinois at Urbana-Champaign's Center for Nutrition, Learning and Memory/Abbott Nutrition

USDA ARS, Beltsville

Yakult Honsha, Ltd.

THANK YOU TO THE SPONSORS OF ASN'S RESEARCH INTEREST SECTIONS, FIFTEEN SCIENTIFIC COMMUNITIES THAT ARE VITAL TO ADVANCING RESEARCH AND FOSTERING TOMORROW'S LEADERS IN NUTRITION SCIENCE.

Abbott Nutrition

Almond Board of California

American Institute for Cancer Research

Amway/Nutrilite

California Dried Plum Board

Center for Advanced Functional Foods Research and Entrepreneurship at Ohio State University

Council for Responsible Nutrition

Craft Technologies

DuPont Nutrition and Health

Egg Nutrition Center

Hass Avocado Board

Herbalife Nutrition Institute

International Society for Research on Human Milk and Lactation

Kemin Industries, Inc.

Kraft Foods Group

McCormick Science Institute

Mead Johnson Nutrition

Mondelez International Inc.

Monsanto Company

National Cattlemen's Beef Association

National Confectioners Association

National Dairy Council

Nestlé Nutrition Institute

Pfizer, Inc.

Shaklee

Sight and Life/DSM Nutritional Products

Teklad Diets/Harlan Laboratories, Inc.

ASN Archives

*To preserve historical information about ASN and
our role in the development of nutrition science*

The Archives of the American Society for Nutrition (ASN) are housed at the Annette and Irwin Eskind Biomedical Library at the Vanderbilt University School of Medicine in Nashville, Tennessee. Learn more at www.nutrition.org/about-asn.

Pictured top left is the Eskind Library, which also houses the rare books and papers of William J. Darby, Ph.D. (1913-2001). Dr. Darby, who was instrumental in depositing the Archives in 1980, was President of the American Institute of Nutrition (1958-59), and a Fellow (1984). The School of Medicine appears bottom left, as well as a student laboratory in the biochemistry department (below), both from the late 1920s.



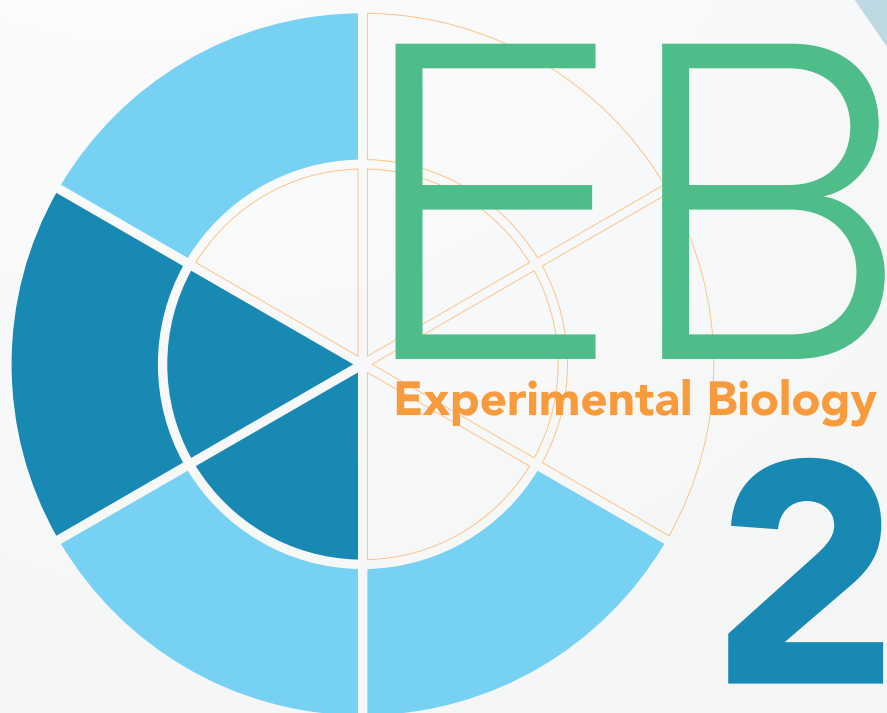
American Society for Nutrition
Excellence in Nutrition Research and Practice

*Support ASN's History of Nutrition Committee
and Historical Efforts at www.nutrition.org/contribute*

Photos courtesy of Eskind Biomedical Library Special Collections

experimentalbiology.org

See you
Next Year!



San Diego
April 2 – 6

Abstract Deadline:
Friday, November 6, 2015

Annual Meetings of:

